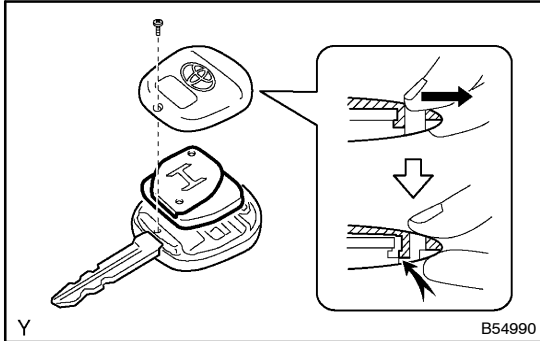


TRANSMITTER SUB-ASSY MODULE SET DOOR CONTROL REPLACEMENT

HINT:

Installation is in the reverse order of removal. But, the installation is indicated only when it has a point.



1. REMOVE TRANSMITTER SUB-ASSY MODULE SET DOOR CONTROL

CAUTION:

Special caution should be taken for handling each component as they are precise electronic components.

(a) Using a screwdriver, remove the screw and cover.

CAUTION:

Do not pry out the cover forcibly.

HINT:

Push the cover with a finger as shown in the illustration, so that there becomes clearance, then pry out the cover from that clearance.

(b) Remove the transmitter assembly.

2. INSTALL TRANSMITTER SUB-ASSY MODULE SET DOOR CONTROL

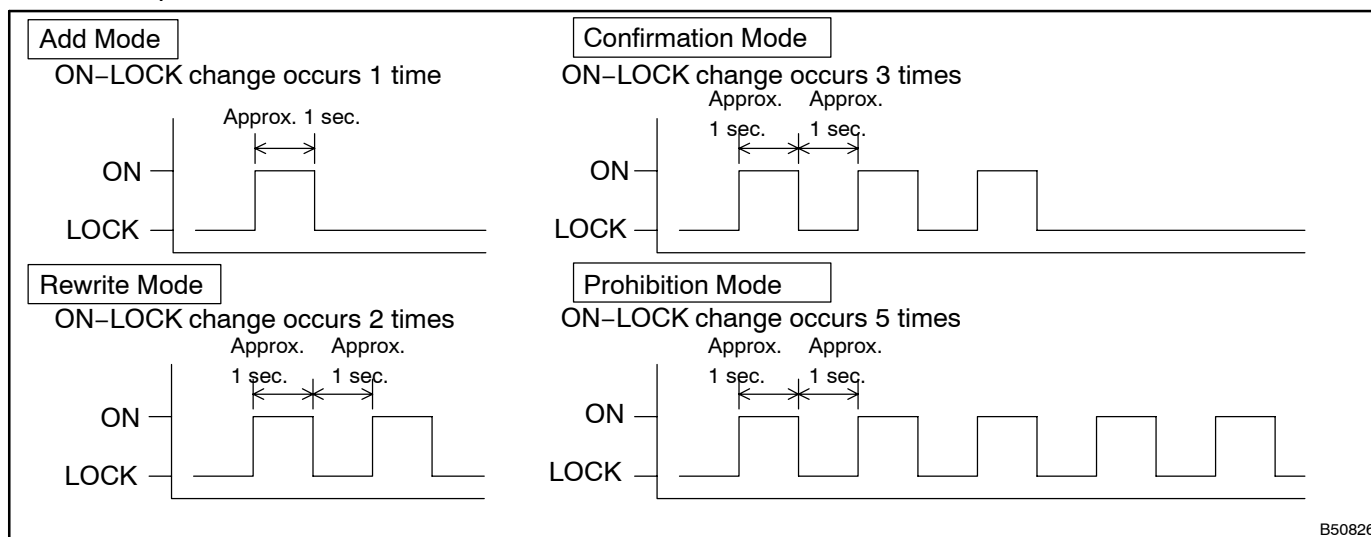
- (a) Assemble the transmitter to the key plate and the cover.
- (b) Using a screwdriver, tighten the screw.
- (c) Make a registration of recognition code after exchanging the transmitter with new one.

3. REGISTRATION OF RECOGNITION CODE

HINT:

- The add mode is used to retain codes already registered while registering new recognition codes. This mode is used to add a new transmitter. If the number of registered codes exceeds 4, previously registered codes will be correspondingly erased in order, starting from the first registered code.
 - The rewrite mode is used to erase all the previously registered codes but register only new recognition codes. This mode is used to exchange the transmitter or the door control receiver with new one.
 - The prohibition mode is used to erase all the registered codes and cancels the wireless door lock function. Use this mode when the transmitter is lost.
 - The confirmation mode is for confirming how many recognition codes have already been registered before an additional registration of the recognition codes.
- (a) The vehicle should be in the following conditions.
- (1) The key is not inserted in the ignition key cylinder.
 - (2) Driver's door is opened. (The other doors are closed)
 - (3) Driver's door is unlocked. (The other doors are locked)

- (b) Perform the followings after the above operations have been done.
- (1) Insert the key plate into the ignition key cylinder, then pull it out. (Perform this operation twice within 5 seconds)
 - (2) After the above operations have been done, close and open the driver door twice within 40 seconds, and then insert the key plate into the ignition key cylinder, then pull it out.
 - (3) After the above operations have been done, close and open the driver door twice within 40 seconds, and then insert the key plate into the ignition key cylinder, then close the door.
 - (4) After the above operations have been done, turn the ignition switch from ON to LOCK at about 1-second interval 1 to 5 times to select the modes within 40 seconds, and then pull out the key plate.



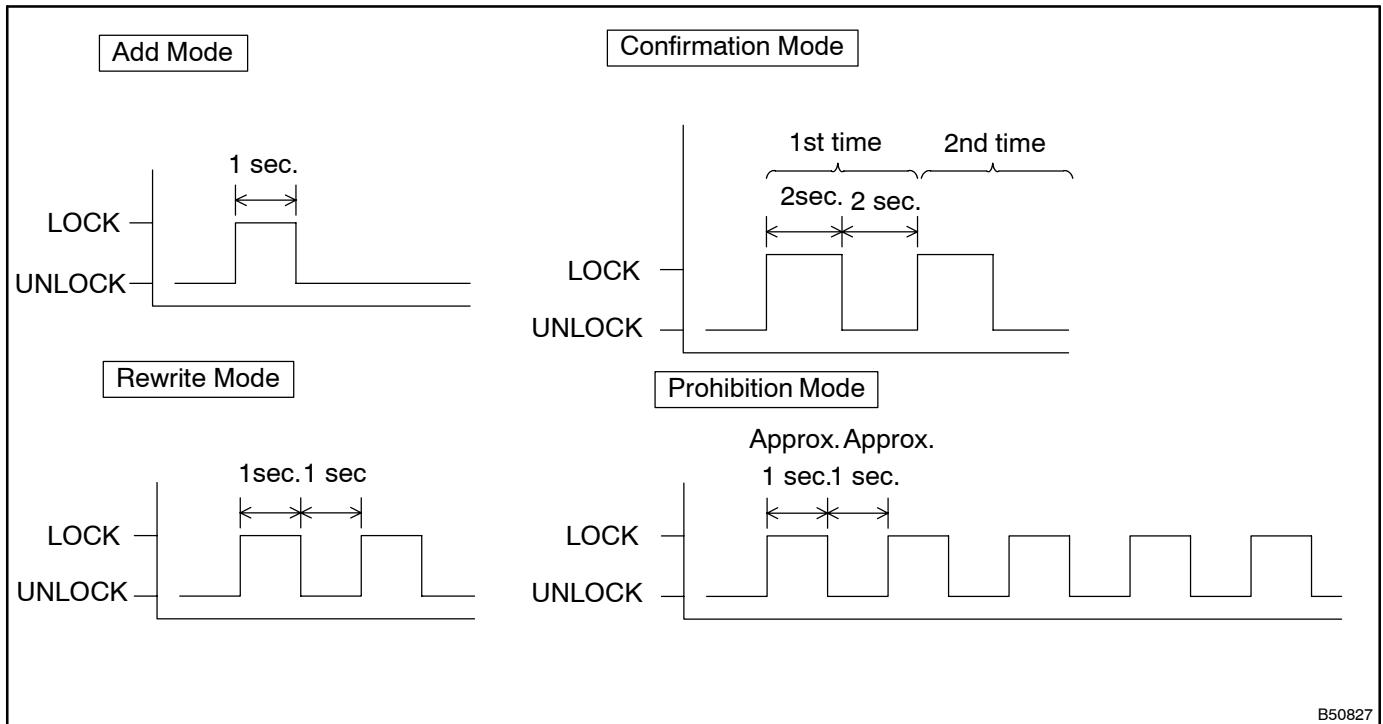
NOTICE:

If the number of the ON-LOCK operation of the ignition switch is 4 or 6, the operation will finish without any signs.

- (5) After selecting a mode, the body ECU automatically performs the LOCK-UNLOCK operation within 3 seconds to inform the operator of the selected mode.

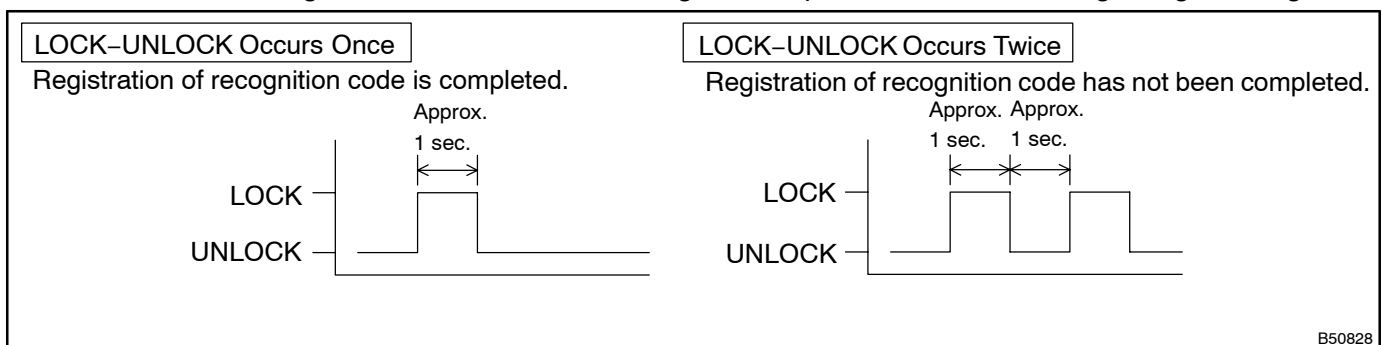
HINT:

- In the confirmation mode as shown in the illustration, when the operation is performed twice, it directs that 2 types of recognition code have been registered.
- In the confirmation mode, if the number of the registration code is 0, the LOCK-UNLOCK operation is automatically performed 5 times.
- If the prohibition mode and confirmation mode are selected, registration of recognition code is completed.



(c) Registration of transmitter:

- (1) Within 40 seconds after the add mode or the rewrite mode has been selected, keep pressing the LOCK and UNLOCK switch on the transmitter switch simultaneously for 1.5 seconds or less. And within 3 seconds after the transmitter switch has been turned OFF, press either of the LOCK or UNLOCK switch for 1.0 second or more.
- (2) Within 3 seconds after the transmitter switch has been turned OFF, the LOCK-UNLOCK operation will be automatically performed once if the registration of the recognition code of the transmitter is completed correctly. If the LOCK-UNLOCK operation will be performed twice, the registration of recognition code failed. Do the registration procedure from the beginning once again.



- (3) When continuing the registration, register the transmitter within 40 seconds after the previous registration.

HINT:

4 type recognition codes can be registered at one time.

- (d) If even one of the following conditions is satisfied, the registration mode will finish.
- (1) 40 seconds have elapsed under the condition of an input of the registration mode being ready.
 - (2) The driver's door is opened
 - (3) The key plate is inserted in the ignition key cylinder.
 - (4) 4 type recognition codes are registered at once.