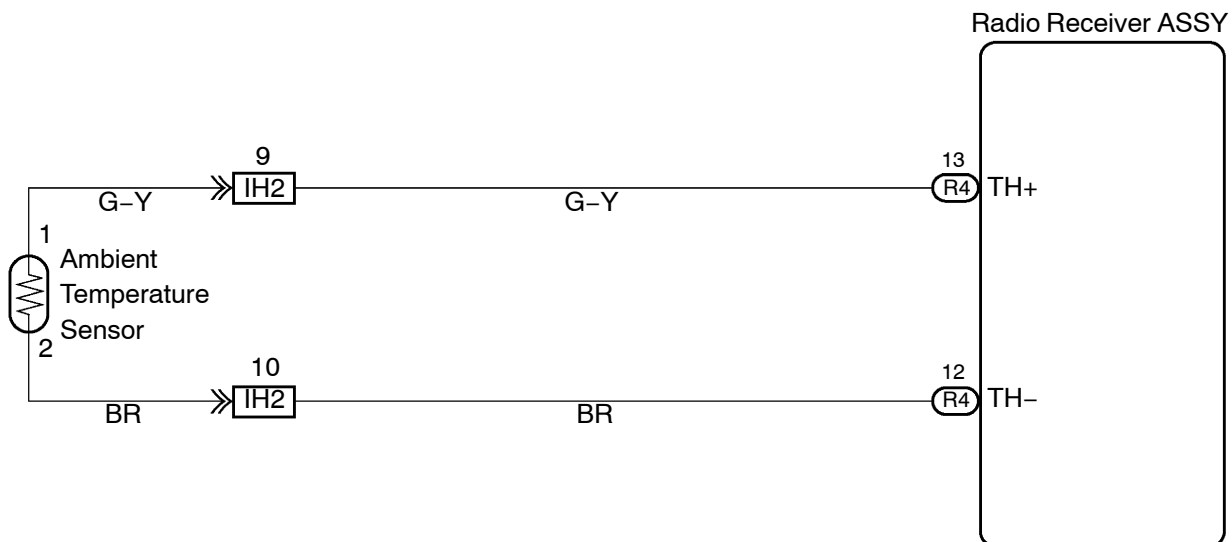


THE AMBIENT TEMPERATURE DOES NOT DISPLAY

WIRING DIAGRAM

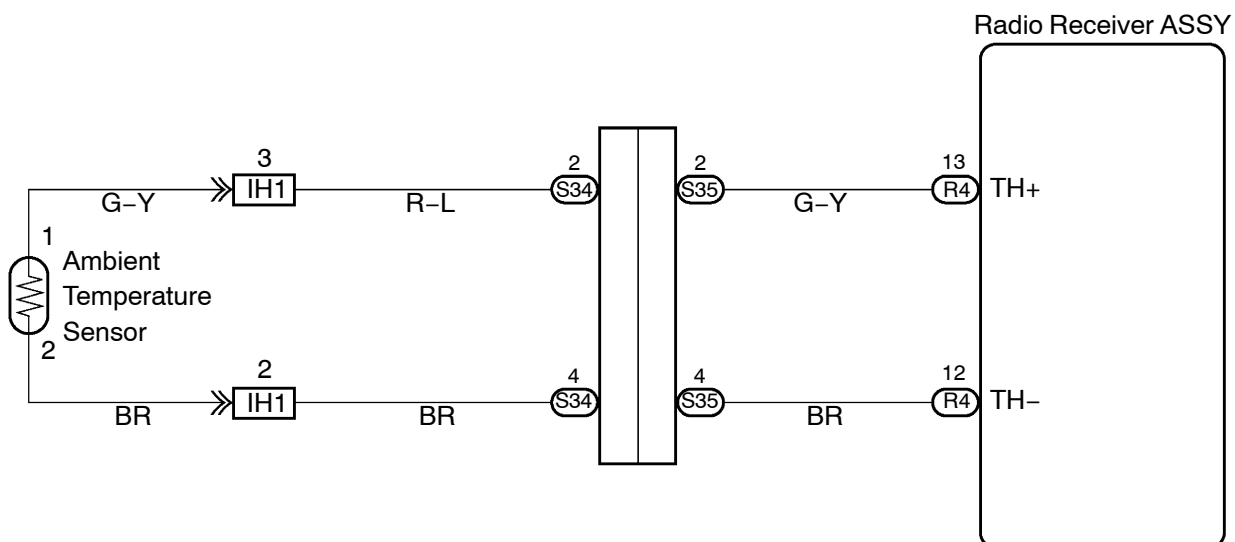
LHD models:



H

E55639

RHD models:

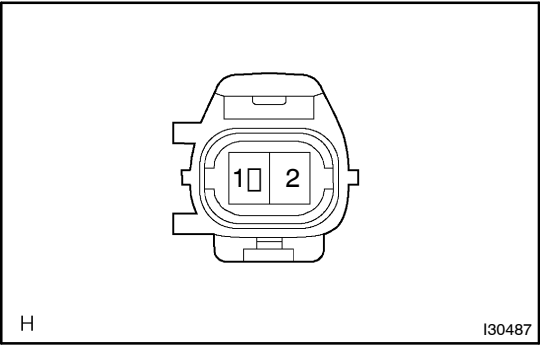


H

E55640

INSPECTION PROCEDURE

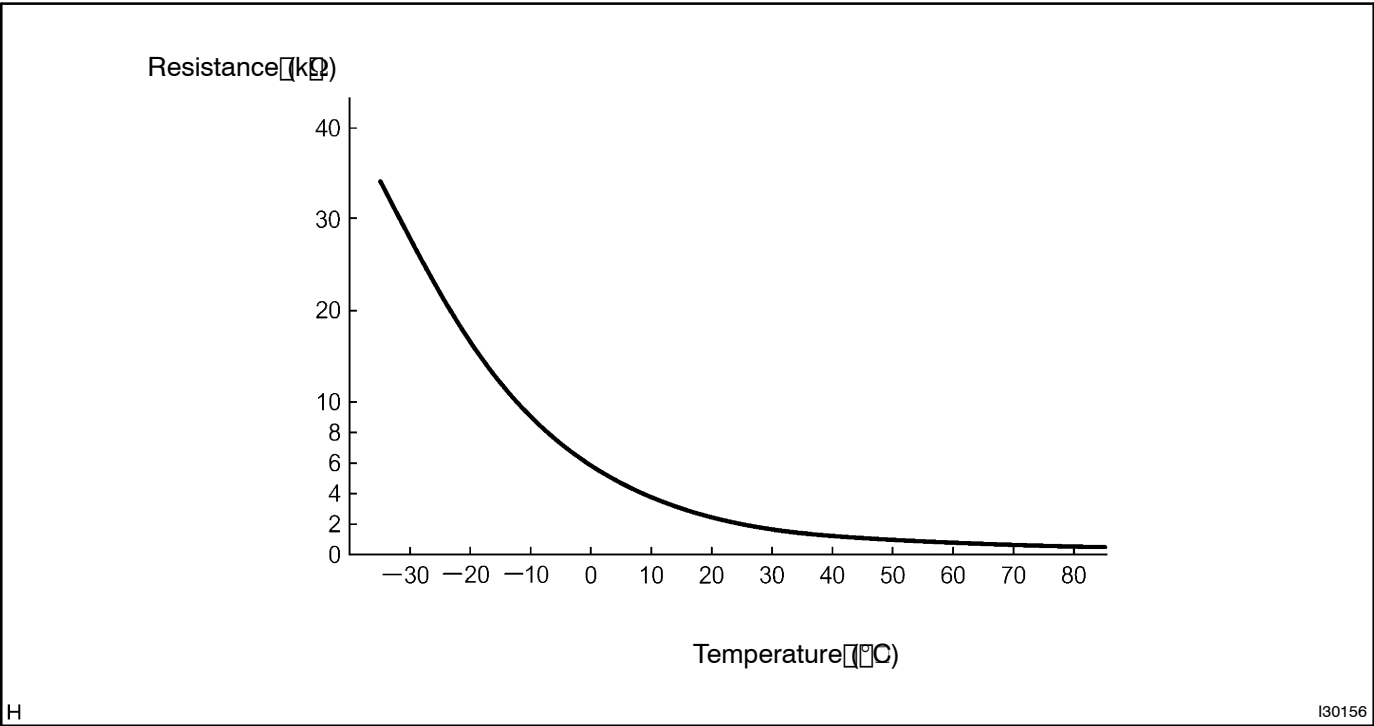
1 INSPECT COOLER (AMBIENT TEMP. SENSOR) THERMISTOR



- (a) Remove cooler (ambient temp. sensor) thermistor.
- (b) Measure resistance between terminals 1 and 2 of cooler (ambient temp. sensor) thermistor connector at each temperature.

Resistance:
at 25°C (77°F) 1.65 – 1.75 kΩ
at 40°C (104°F) 0.85 – 0.95 kΩ

HINT:
As the temperature increases, the resistance decreases.
Resistance:



NG REPLACE THERMISTOR ASSY

OK

2 CHECK HARNESS AND CONNECTOR (THERMISTOR ASSY-RADIO RECEIVER ASSY)

NG REPAIR OR REPLACE HARNESS OR CONNECTOR (See page 01-30)

OK

CHECK AND REPLACE RADIO RECEIVER ASSY