

REAR AXLE BEAM ASSY REPLACEMENT

HINT:

COMPONENTS: [See page 27-1.](#)

1. REMOVE REAR WHEEL
2. REMOVE SKID CONTROL SENSOR WIRE (See Pub. No. RM864E, page 27-4)
3. REMOVE EXHAUST PIPE ASSY CENTER
4. SEPARATE PARKING BRAKE CABLE ASSY NO.3 (See Pub. No. RM864E, page 27-4)
5. SEPARATE PARKING BRAKE CABLE ASSY NO.2 (See Pub. No. RM864E, page 27-4)
6. LOOSEN REAR AXLE BEAM ASSY (See Pub. No. RM864E, page 27-4)
7. SEPARATE REAR BRAKE TUBE NO.4 (See Pub. No. RM864E, page 27-4)
SST 09023-00100
8. SEPARATE REAR BRAKE TUBE NO.3
SST 09023-00100

HINT:

Separate the RH side by the same procedures with the LH side.

9. REMOVE REAR DISC BRAKE CALIPER ASSY LH
(a) Remove the 2 bolts and separate the rear disc brake caliper assy.
10. REMOVE REAR DISC BRAKE CALIPER ASSY RH

HINT:

Remove the RH side by the same procedures with the LH side.

11. REMOVE REAR DISC
12. REMOVE REAR AXLE HUB & BEARING ASSY LH (See Pub. No. RM864E, page 30-28)
13. REMOVE REAR AXLE HUB & BEARING ASSY RH

HINT:

Remove the RH side by the same procedures with the LH side.

14. REMOVE PARKING BRAKE PLATE SUB-ASSY LH
(a) Remove the 2 rear axle bearing retainers and parking brake plate LH.
15. REMOVE PARKING BRAKE PLATE SUB-ASSY RH

HINT:

Remove the RH side by the same procedures with LH side.

16. REMOVE LWR CONTROL ARM DYNAMIC DAMPER
(a) Remove the bolt and lwr control arm dynamic damper.

HINT:

Employ the same manner described to the other side.

17. SEPARATE SHOCK ABSORBER ASSY REAR LH (See Pub. No. RM864E, page 27-4)
18. SEPARATE SHOCK ABSORBER ASSY REAR RH

HINT:

Separate the RH side by the same procedures with the LH side.

19. REMOVE COIL SPRING REAR LH (See Pub. No. RM864E, page 27-4)
20. REMOVE COIL SPRING REAR RH

HINT:

Remove the RH side by the same procedures with the LH side.

21. REMOVE REAR COIL SPRING INSULATOR UPPER LH
22. REMOVE REAR COIL SPRING INSULATOR UPPER RH

23. REMOVE REAR AXLE BEAM ASSY

- (a) Support the rear axle beam with a jack.
- (b) Remove the 2 bolts and 2 nuts.

NOTICE:

While holding the nut, turn and remove the bolt.

- (c) Remove the rear axle beam.

24. REMOVE REAR AXLE BEAM DAMPER

- (a) Remove the axle beam damper from the rear axle beam.

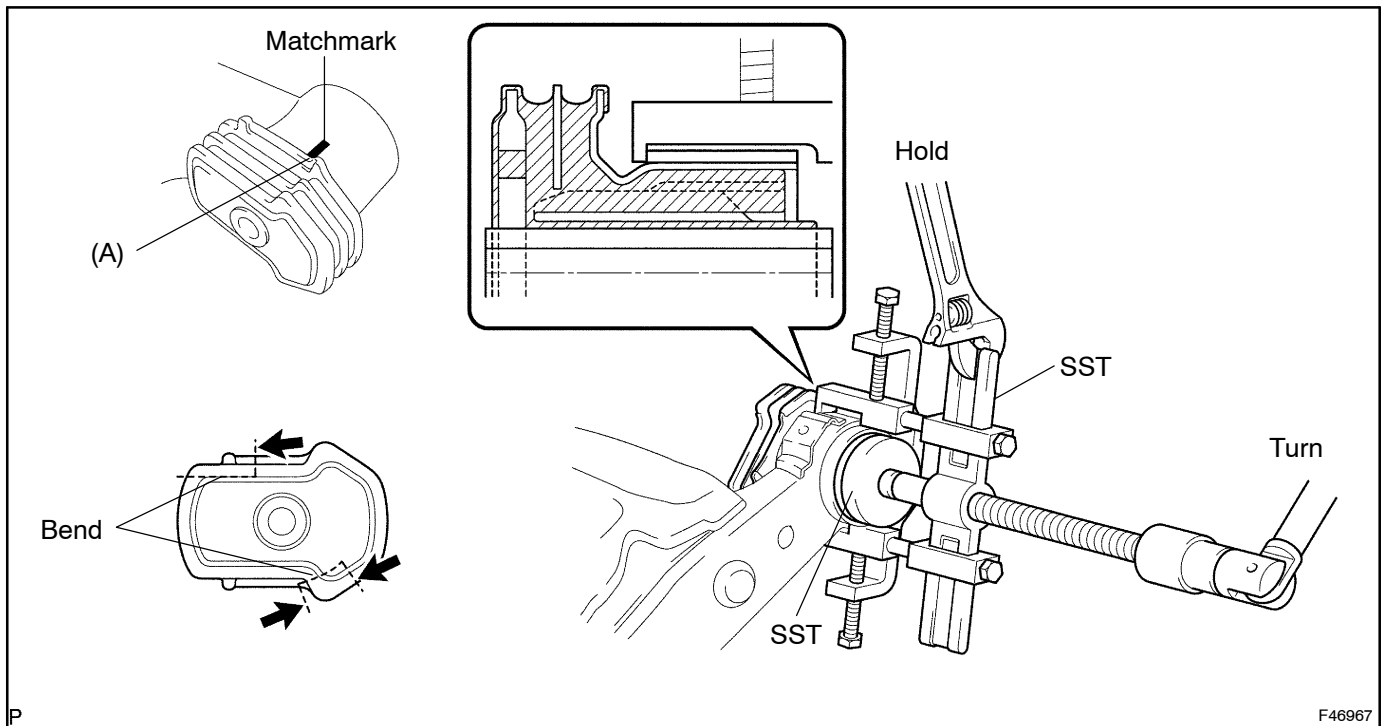
25. REMOVE REAR AXLE CARRIER BUSH LH

- (a) Put a matchmark, aligning with part (A) of the bush on the rear axle beam.
- (b) Make 2 bends in the rim of the bush using a chisel and hammer.
- (c) Remove the bush from the rear axle beam using SST.

SST 09950-40011 (09951-04020, 09952-04010, 09953-04030, 09954-04020, 09955-04051, 09957-04010, 09958-04011), 09950-60010 (09951-00630)

NOTICE:

- **Set the SST so that the part where the lwr control arm dynamic damper is to be installed is free.**
- **Do not erase the matchmark on the rear axle beam when removing the bush.**
- **Apply chassis black if the rear axle beam is scratched.**

**26. REMOVE REAR AXLE CARRIER BUSH RH**

SST 09950-40011 (09951-04020, 09952-04010, 09953-04030, 09954-04020, 09955-04051, 09957-04010, 09958-04011), 09950-60010 (09951-00630)

HINT:

Remove the RH side by the same procedures with the LH side.

27. INSTALL REAR AXLE CARRIER BUSH LH

- (a) Temporarily install a new bush, aligning part (A) with the matchmark on the rear axle beam.

NOTICE:

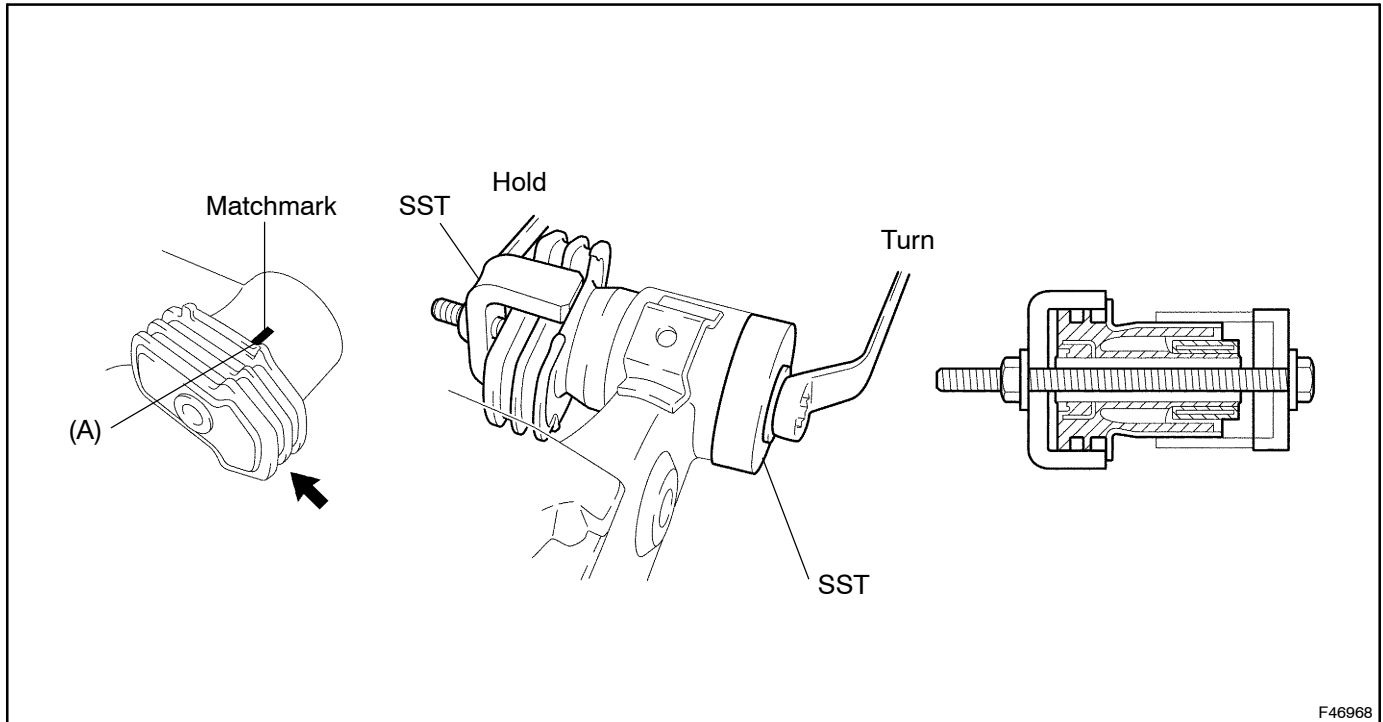
Install the bush in the same direction as before it was removed.

- (b) Install the bush to the rear axle beam using SST.

SST 09710-28030 (09711-02010, 09711-02020, 90101-12177, 90170-12110, 94612-11200)

NOTICE:

Do not damage the rubber sections indicated by the arrow in the illustration when installing the bush.



F46968

28. INSTALL REAR AXLE CARRIER BUSH RH

SST 09710-28030 (09711-02010, 09711-02020, 90101-12177, 90170-12110, 94612-11200)

HINT:

Install the RH side by the same procedures with the LH side.

29. INSTALL REAR AXLE BEAM DAMPER

- (a) Install the axle beam damper to the rear axle beam.

30. TEMPORARILY TIGHTEN REAR AXLE BEAM ASSY

- (a) Support the rear axle beam with a jack.
 (b) Install the rear axle beam and 2 bolts, and temporarily tighten the 2 nuts.

31. INSTALL REAR COIL SPRING INSULATOR UPPER LH (See Pub. No. RM864E, page 27-4)**32. INSTALL REAR COIL SPRING INSULATOR UPPER RH (See Pub. No. RM864E, page 27-4)****33. INSTALL COIL SPRING REAR LH (See Pub. No. RM864E, page 27-4)****34. INSTALL COIL SPRING REAR RH (See Pub. No. RM864E, page 27-4)****35. CONNECT SHOCK ABSORBER ASSY REAR LH (See Pub. No. RM864E, page 27-11)****36. CONNECT SHOCK ABSORBER ASSY REAR RH****HINT:**

Connect the RH side by the same procedures with the LH side.

37. INSTALL PARKING BRAKE PLATE SUB-ASSY LH

- (a) Install the 2 rear axle bearing retainers to the axle beam.
- (b) Install the parking brake plate LH to the axle beam.

38. INSTALL PARKING BRAKE PLATE SUB-ASSY RH

HINT:

Install the RH side by the same procedures with the LH side.

39. INSTALL REAR AXLE HUB & BEARING ASSY LH (See Pub. No. RM864E, page 30-28)**40. INSTALL REAR AXLE HUB & BEARING ASSY RH**

HINT:

Install the RH side by the same procedures with the LH side.

41. INSTALL REAR DISC**42. INSTALL REAR DISC BRAKE CALIPER ASSY LH**

- (a) Install the 2 bolts and rear disc brake caliper assy to the rear axle beam.

Torque: 88 N·m (897 kgf·cm, 65 ft·lbf)**43. INSTALL REAR DISC BRAKE CALIPER ASSY RH**

HINT:

Install the RH side by the same procedures with the LH side.

44. CONNECT REAR BRAKE TUBE NO.4 (See Pub. No. RM864E, page 27-4)

SST 09023-00100

45. CONNECT REAR BRAKE TUBE NO.3

SST 09023-00100

HINT:

Connect the RH side by the same procedures with the LH side.

46. CONNECT PARKING BRAKE CABLE ASSY NO.2 (See Pub. No. RM864E, page 27-4)**47. CONNECT PARKING BRAKE CABLE ASSY NO.3 (See Pub. No. RM864E, page 27-4)****48. FULLY TIGHTEN REAR AXLE BEAM ASSY (See Pub. No. RM864E, page 27-4)****49. FULLY TIGHTEN SHOCK ABSORBER ASSY REAR LH (See Pub. No. RM864E, page 27-11)****50. FULLY TIGHTEN SHOCK ABSORBER ASSY REAR RH**

HINT:

Fully tighten the RH side by the same procedures with the LH side.

51. CONNECT SKID CONTROL SENSOR WIRE (See Pub. No. RM864E, page 27-4)**52. INSTALL EXHAUST PIPE ASSY CENTER****53. INSTALL LWR CONTROL ARM DYNAMIC DAMPER**

- (a) Install the lwr control arm dynamic damper with the bolt.

Torque: 30 N·m (306 kgf·cm, 22 ft·lbf)

HINT:

Employ the same manner described to the other side.

54. BLEED BRAKE LINE (See page 32-1)**55. INSTALL REAR WHEEL****Torque: 103 N·m (1,050 kgf·cm, 76 ft·lbf)****56. INSPECT BRAKE FLUID LEVEL IN RESERVOIR (See page 32-1)****57. INSPECT REAR WHEEL ALIGNMENT (See Pub. No. RM864E, page 27-3)****58. CHECK ABS SPEED SENSOR SIGNAL (See Pub. No. RM864E, page 05-295)**