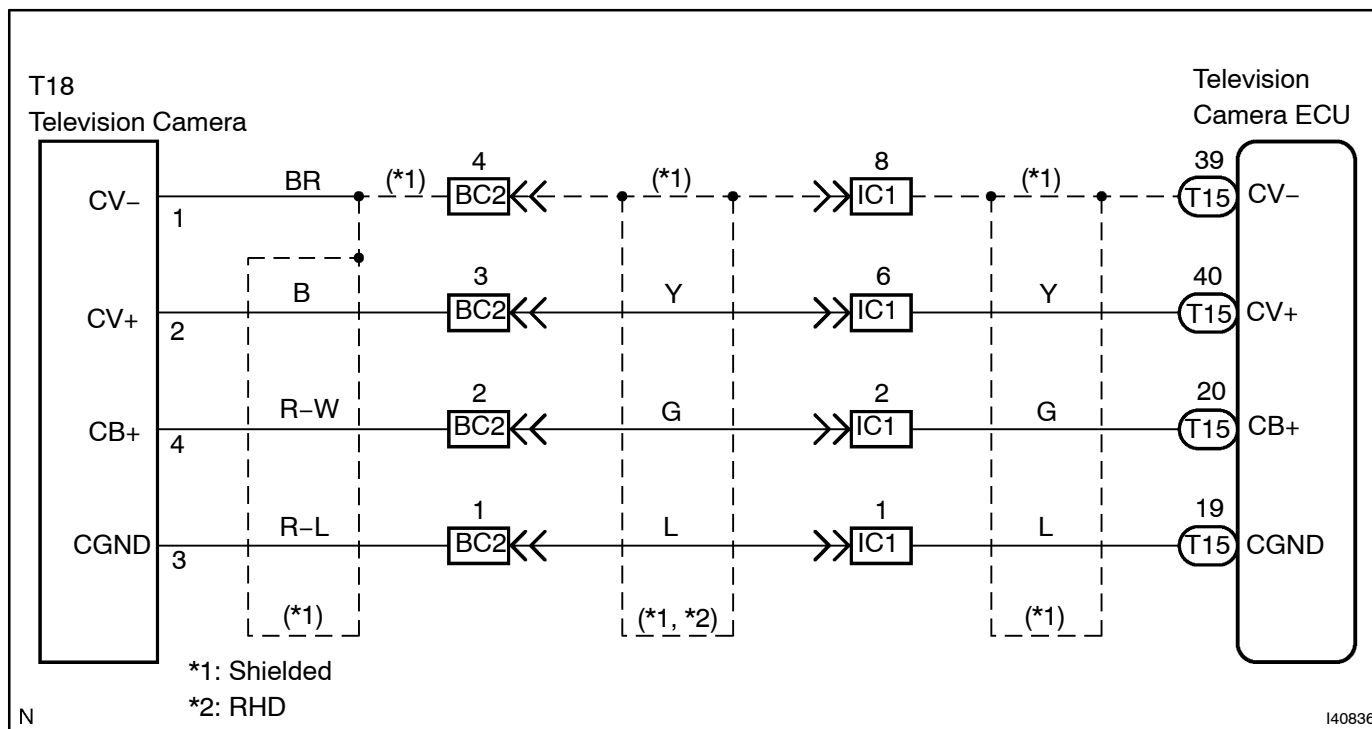


DISPLAY SIGNAL CIRCUIT (TELEVISION CAMERA ASSY - TELEVISION CAMERA ECU)

CIRCUIT DESCRIPTION

This is the display signal circuit of the television camera assy.

WIRING DIAGRAM



INSPECTIONPROCEDURE

1 CHECKNAVIGATIONDISPLAY

(a) Checkwhethernavigationdisplayappearsproperlyornot.

OK:The navigation display properly appears.

HINT:

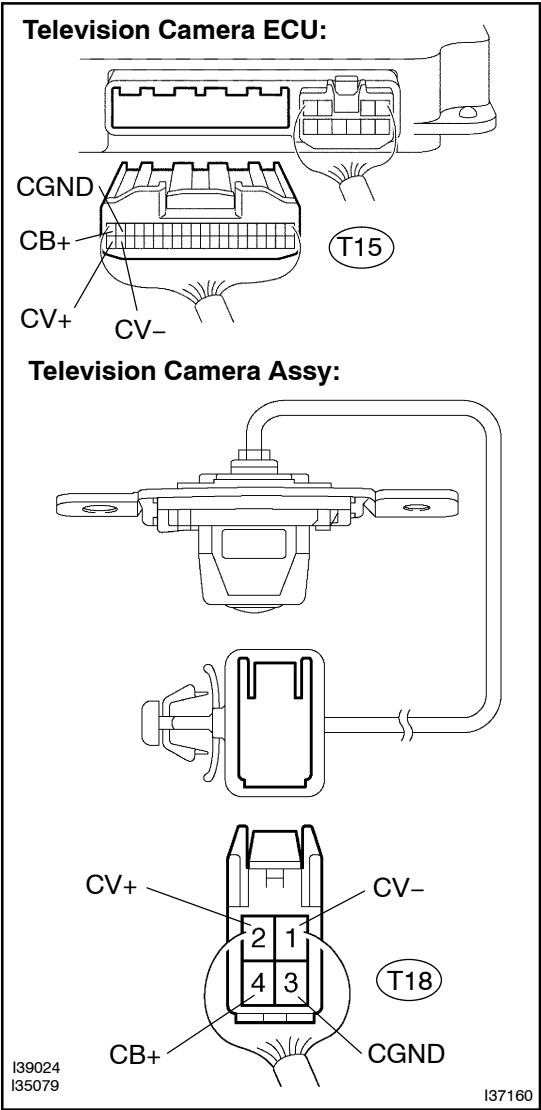
- When trouble occurs in the navigation display, inspect the circuit between the television camera ECU and radio and navigation assy (see page 05-1205).
- When the navigation display is normal, inspect the circuit between the television camera ECU and television camera assy by following the steps below.

NG

INSPECT DISPLAY SIGNAL CIRCUIT
(SEE PAGE 05-1205)

OK

2 CHECK HARNESS AND CONNECTOR(TELEVISION CAMERA ECU - TELEVISION CAMERA ASSY)



- (a) Disconnect the T15 connector from the television camera ECU.
- (b) Disconnect the T18 connector from the television camera assy.
- (c) Measure the resistance according to the value(s) in the table below.

Standard:

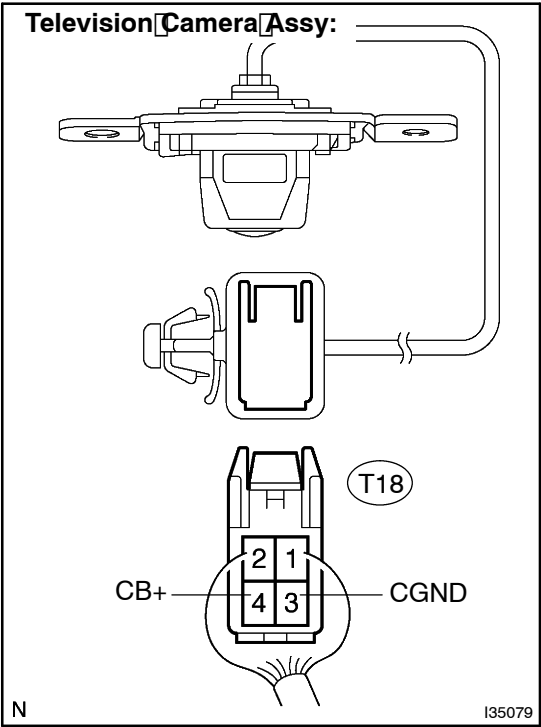
Tester connection (Terminal No.)	Condition	Specified condition
CB+ (T15-20) - CB+ (T18-4)	Always	Below 1 Ω
CGND (T15-19) - CGND (T18-3)	Always	Below 1 Ω
CV+ (T15-40) - CV+ (T18-2)	Always	Below 1 Ω
CV- (T15-39) - CV- (T18-1)	Always	Below 1 Ω
CB+ (T15-20) - Body ground	Always	10 k Ω or higher
CGND (T15-19) - Body ground	Always	10 k Ω or higher
CV+ (T15-40) - Body ground	Always	10 k Ω or higher
CV- (T15-39) - Body ground	Always	10 k Ω or higher

NG

**REPAIR OR REPLACE HARNESS OR
CONNECTOR (TELEVISION CAMERA ECU -
TELEVISION CAMERA ASSY)**

OK

3 INSPECT TELEVISION CAMERA ECU



- (a) Connect the T18 connector to the television camera ECU.
(b) Measure the voltage according to the value(s) in the table below.

Standard:

Tester connection (Terminal No.)	Condition	Specified condition
CB+ (T18-4) - CGND (T18-3)	IG SW ON, Shift lever R position	Approx. 6 V

NG REPLACE TELEVISION CAMERA ECU
(SEE PAGE 67-5)

OK

PROCEED TO NEXT CIRCUIT INSPECTION SHOWN ON PROBLEM SYMPTOMS TABLE
(SEE PAGE 05-1186)