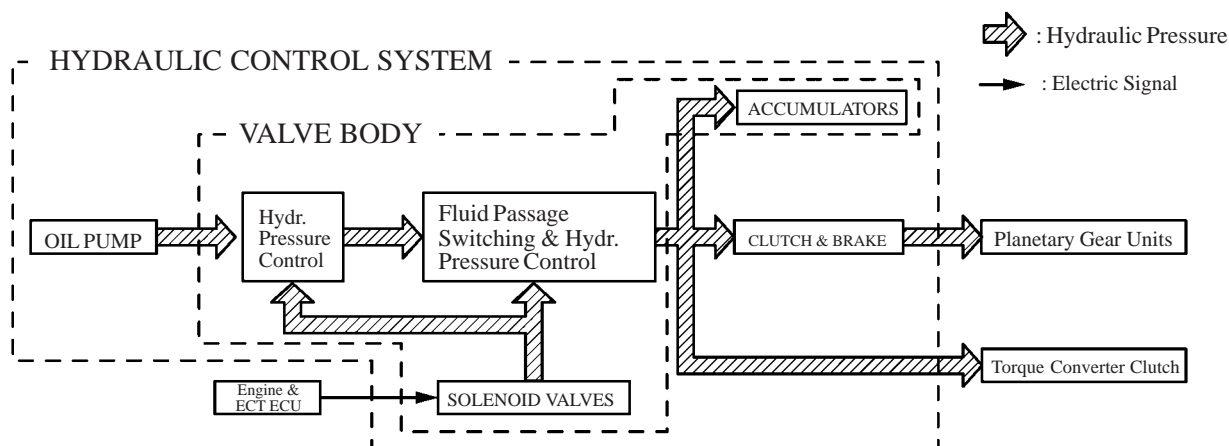


■ HYDRAULIC CONTROL SYSTEM

1. General

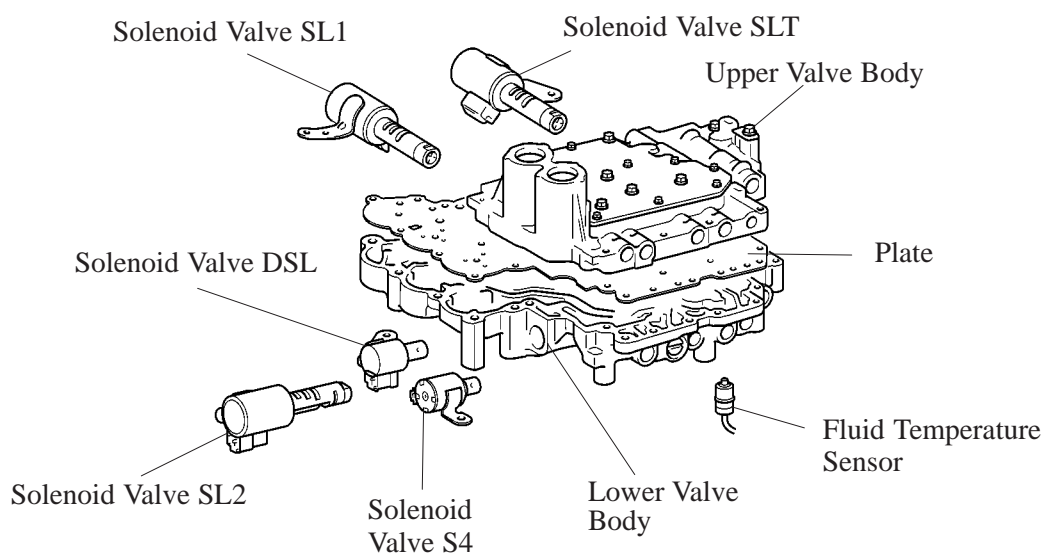
The hydraulic control system is composed of the oil pump, the valve body, the solenoid valves, the accumulators, the clutches and brakes as well as the fluid passages which connected all of these components. Based on the hydraulic pressure acting on the torque converter clutch, clutches and brakes in accordance with the vehicle driving conditions.



206CH22

2. Valve Body

The valve body has a two-stage construction. Also, a compact, lightweight, and highly rigid valve body has been realized. All the solenoid valves are installed in the lower valve body.



181CH111