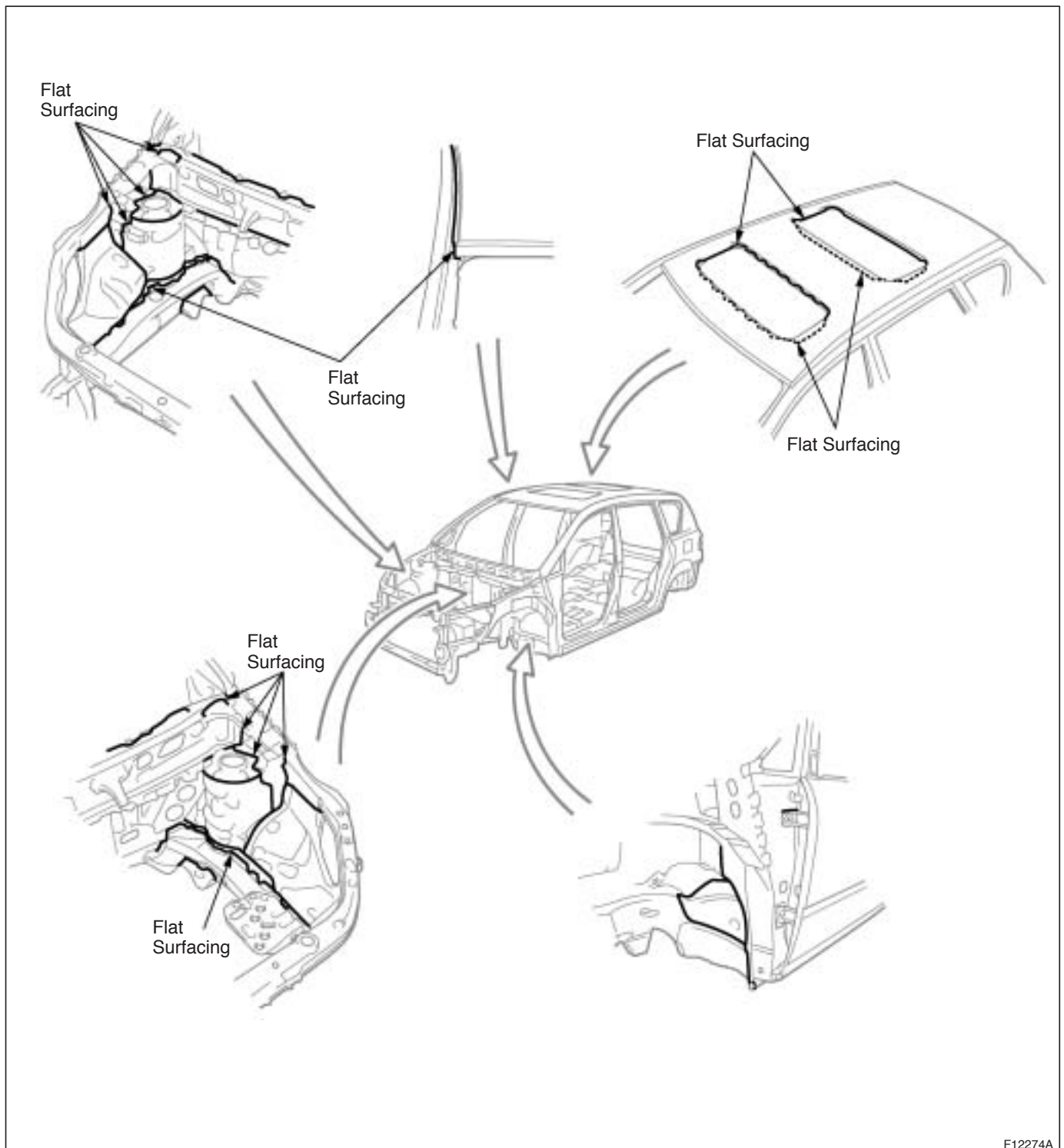


## BODY PANEL SEALING AREAS

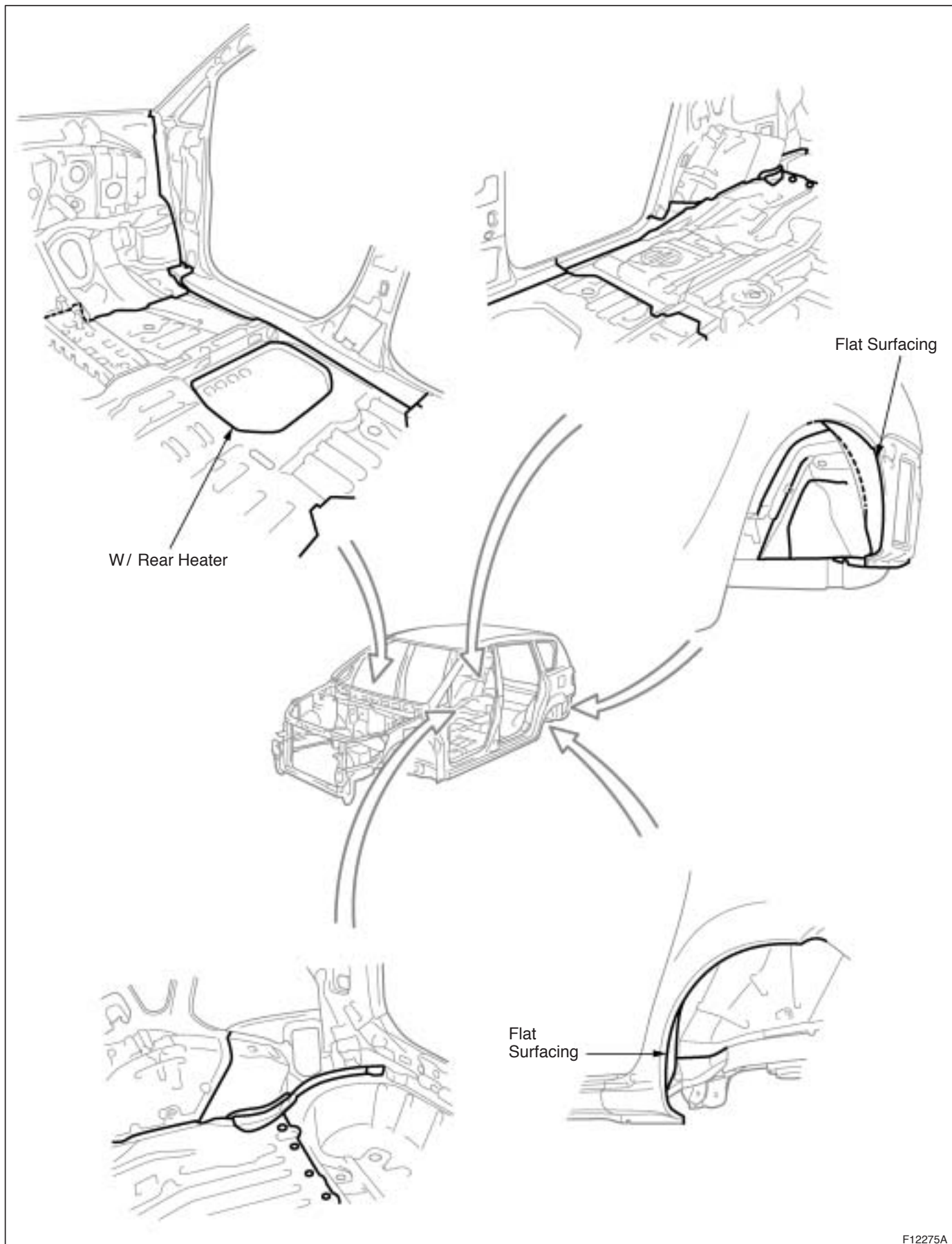
### HINT:

1. Prior to applying body sealer, clean the area with a rag soaked in a grease, wax and silicone remover.
2. If weld-through primer was used, first wipe off any excess and coat with anti-corrosion primer before applying body sealer.
3. Wipe off excess body sealer with a rag soaked in a grease, wax and silicone remover.
4. If body sealer is damaged by peeling, cracks, etc., be sure to repair as necessary.

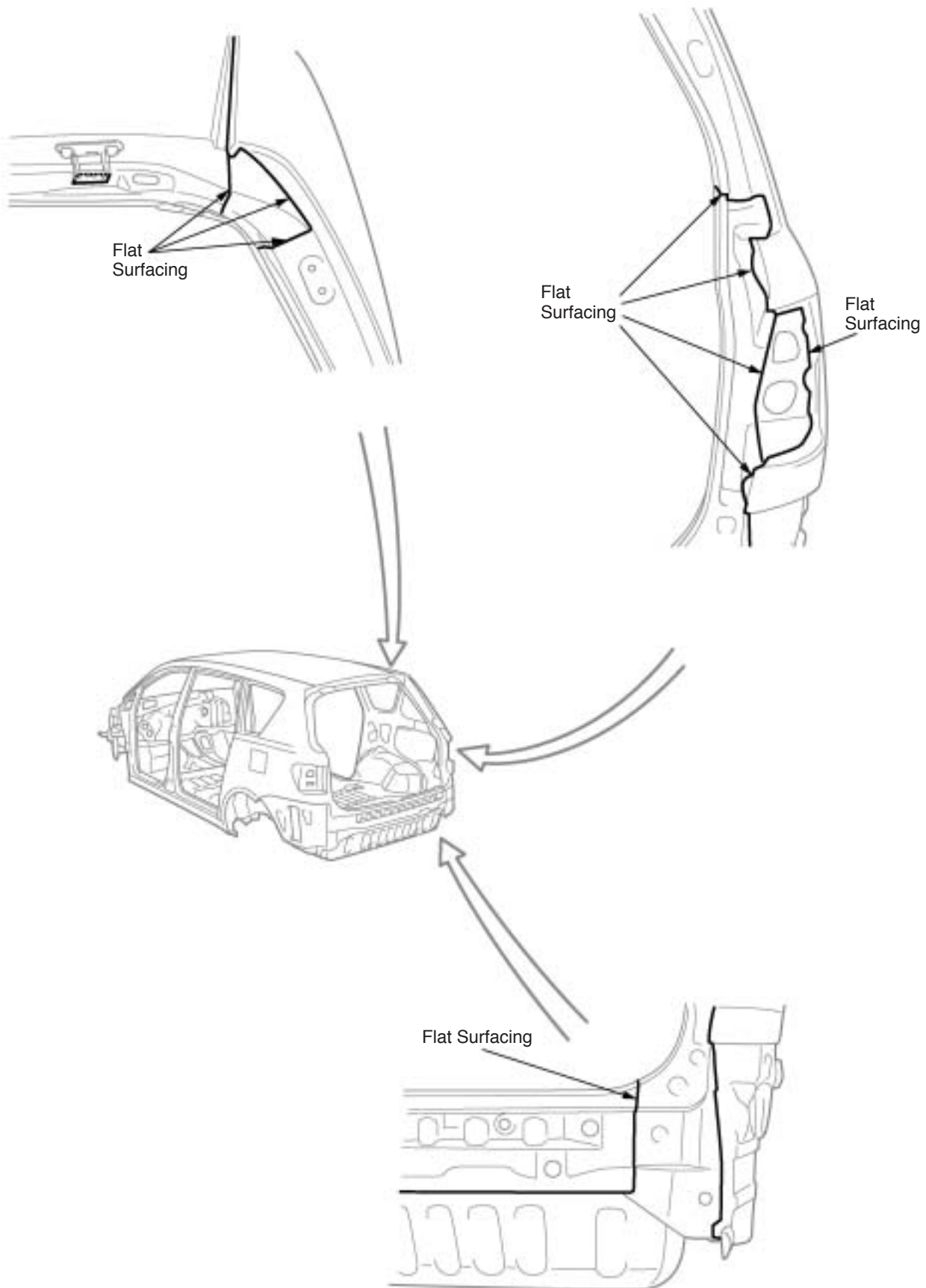
### 1. ENGINE COMPARTMENT



## 2. INSIDE



### 3. REAR LUGGAGE COMPARTMENT



## 4. DOOR PARTS

