

## FRONT BODY PILLAR (CUT) REPLACEMENT

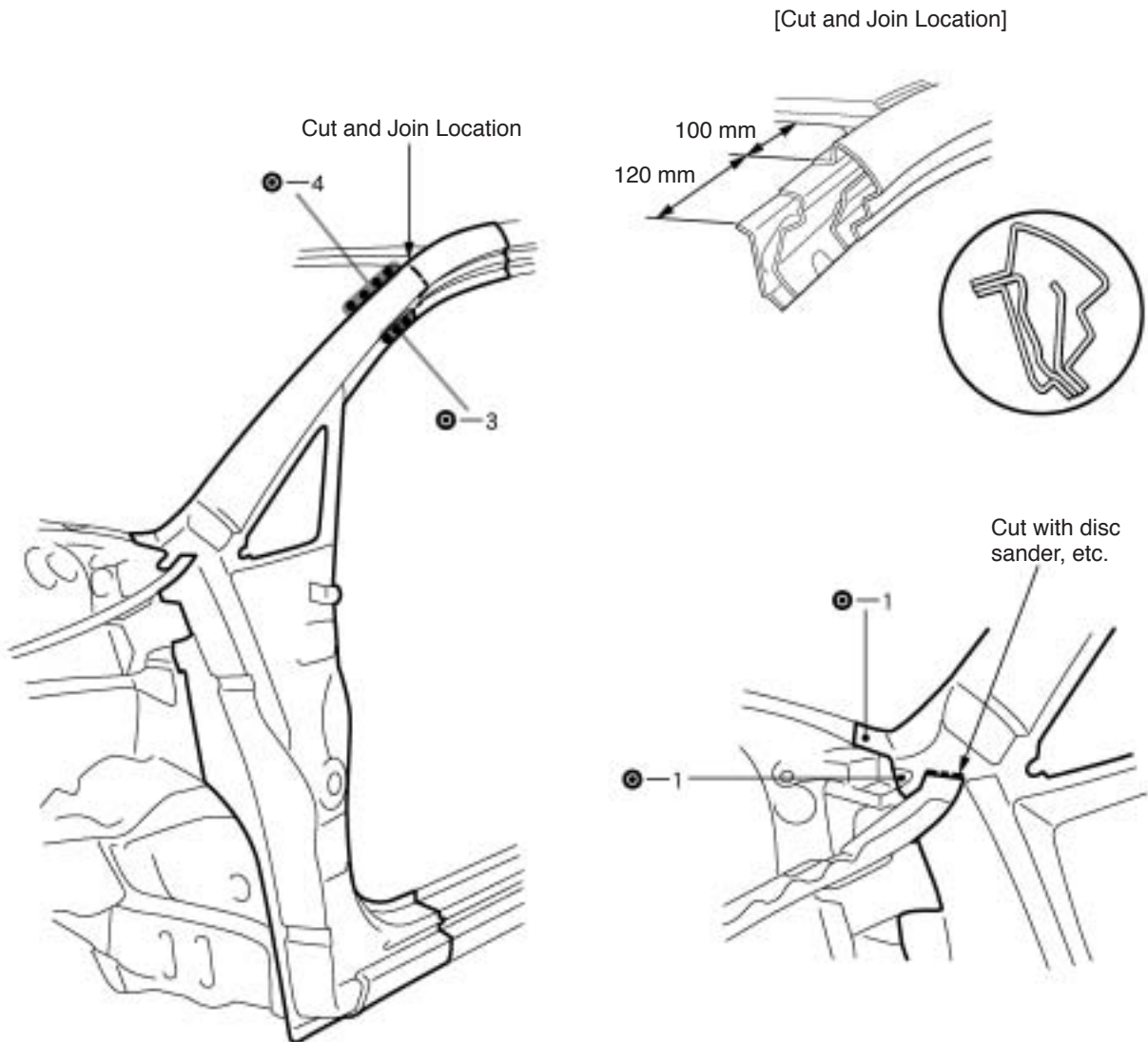
1. REMOVE COWL TOP SIDE PANEL (See page BP-18)

2. REMOVE FRONT BODY PILLAR

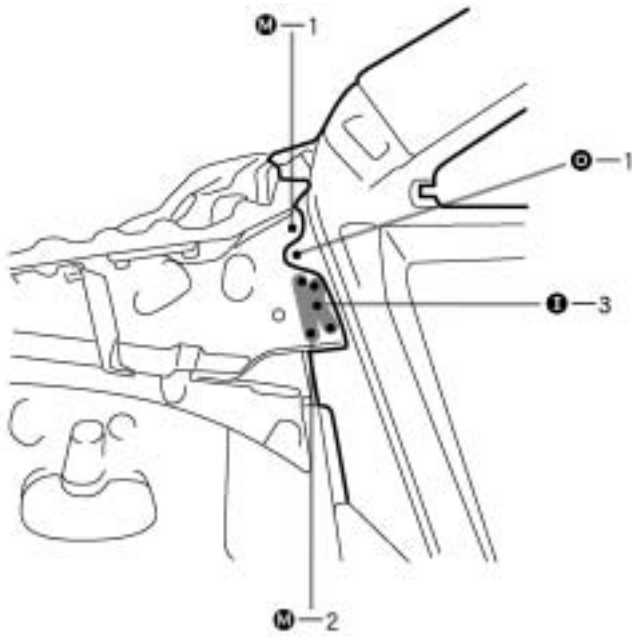
(a) Cut and join the parts at the locations as shown below.

HINT:

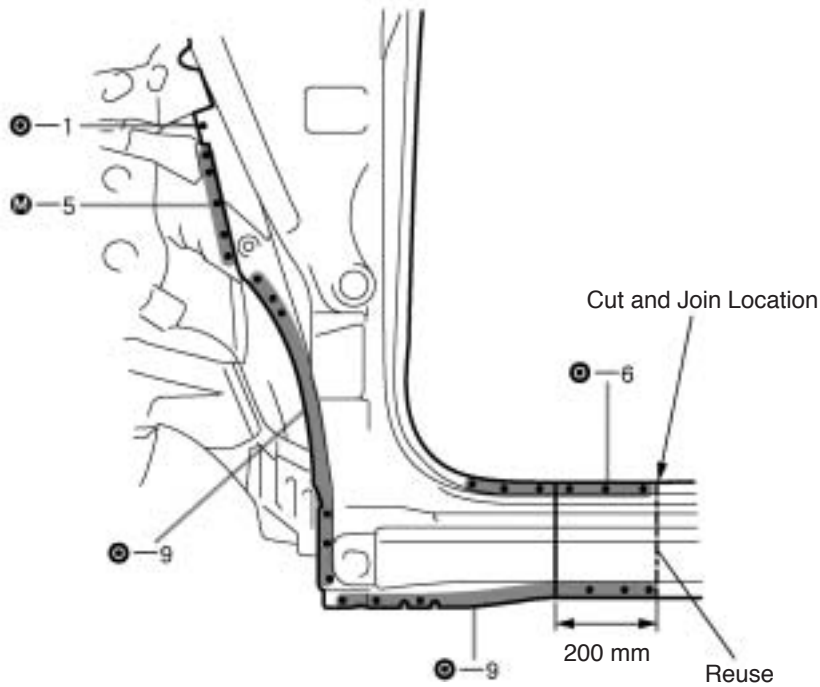
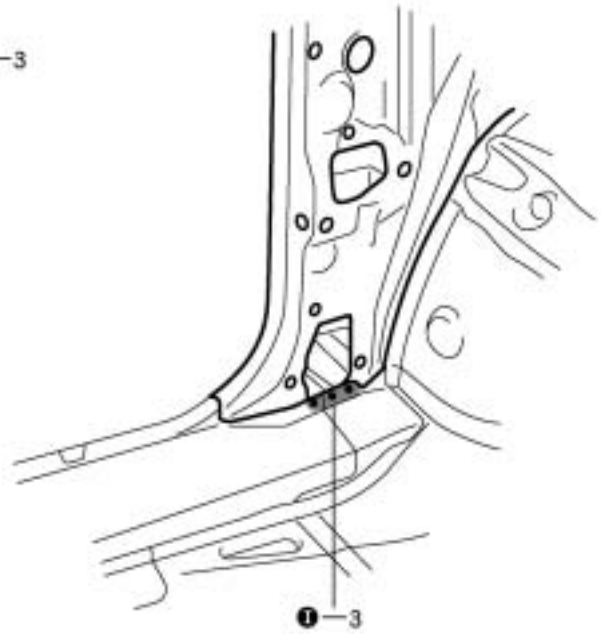
- Shift the each cut and join locations of the outer pillar, cowl side panel and reinforcement.
- This part of the outer panel is reused, since the rocker panel section is cut off at the rear the outer panel supply part cutting position.



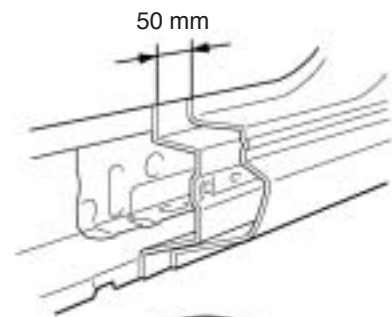
mm	in.
100	3.94
120	4.72



mm	in.
50	1.97
200	7.87



[Cut and Join Location]



**3. INSTALL FRONT BODY PILLAR****HINT:**

Before welding, check the fittings of the front fender, front door, windshield glass, etc., as this has impact on the final look of the outside of the vehicle.

- (a) Disconnect the rocker outer panel of the new parts in the position indicated in the diagram below.
- (b) Before initial spot welding the new parts, weld the cowl side panel, the front pillar reinforcement and the rocker outer panel at standard points.
- (c) Temporarily install the new parts and measure each part in accordance with the body dimension diagram.
- (d) Attach the front fender spacer at the position indicated on the diagram below.
  - (1) Initial spot weld the front fender, and measure the gap between the front fender and the front fender spacer attaching position.
  - (2) Attach a front fender spacer which is thicker than this measured gap.

**HINT:**

Select from thickness of 7.0 mm (0.276 in.), 7.5 mm (0.295 in.), 8.0 mm (0.315 in.), and attach.

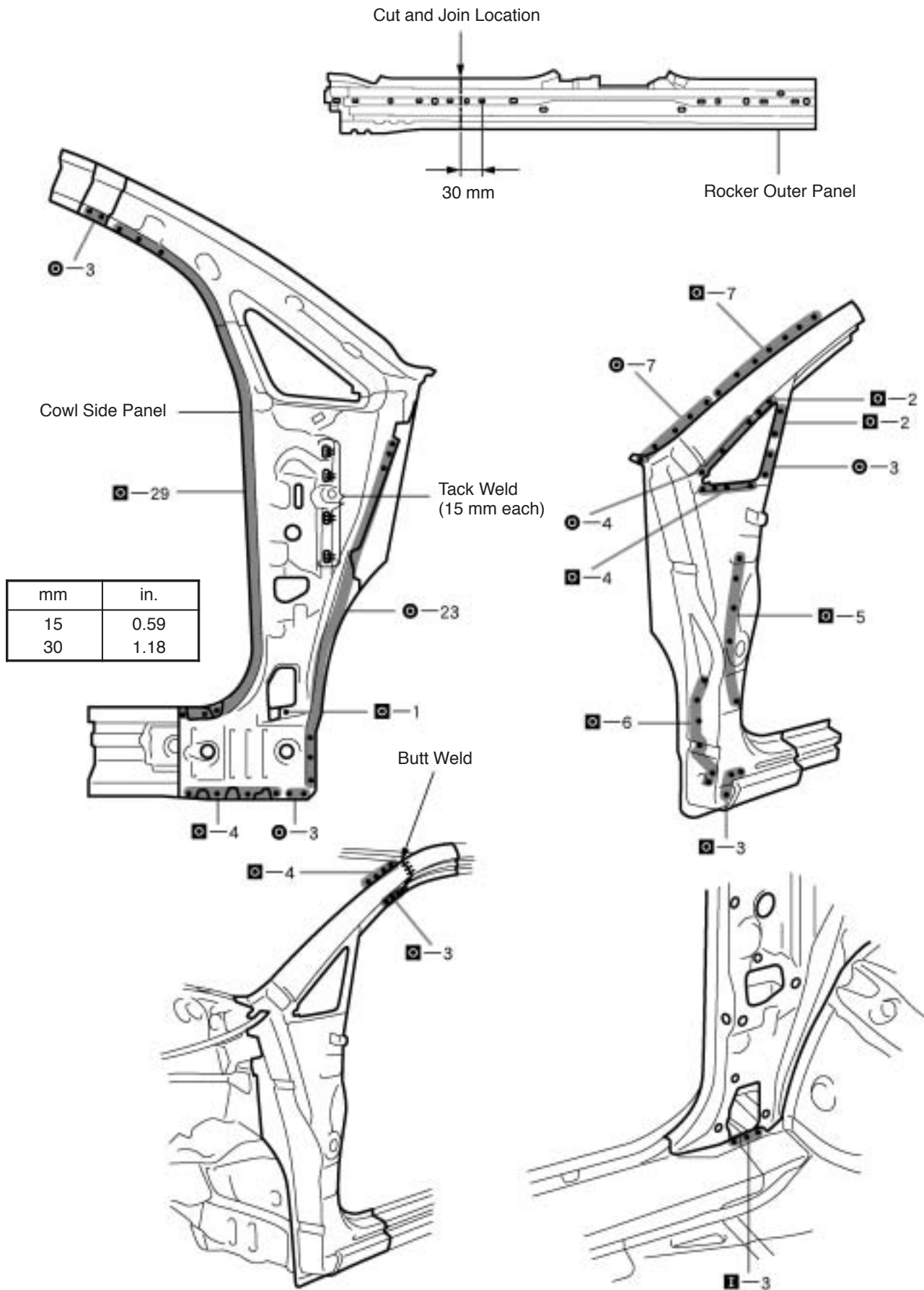
**HINT:**

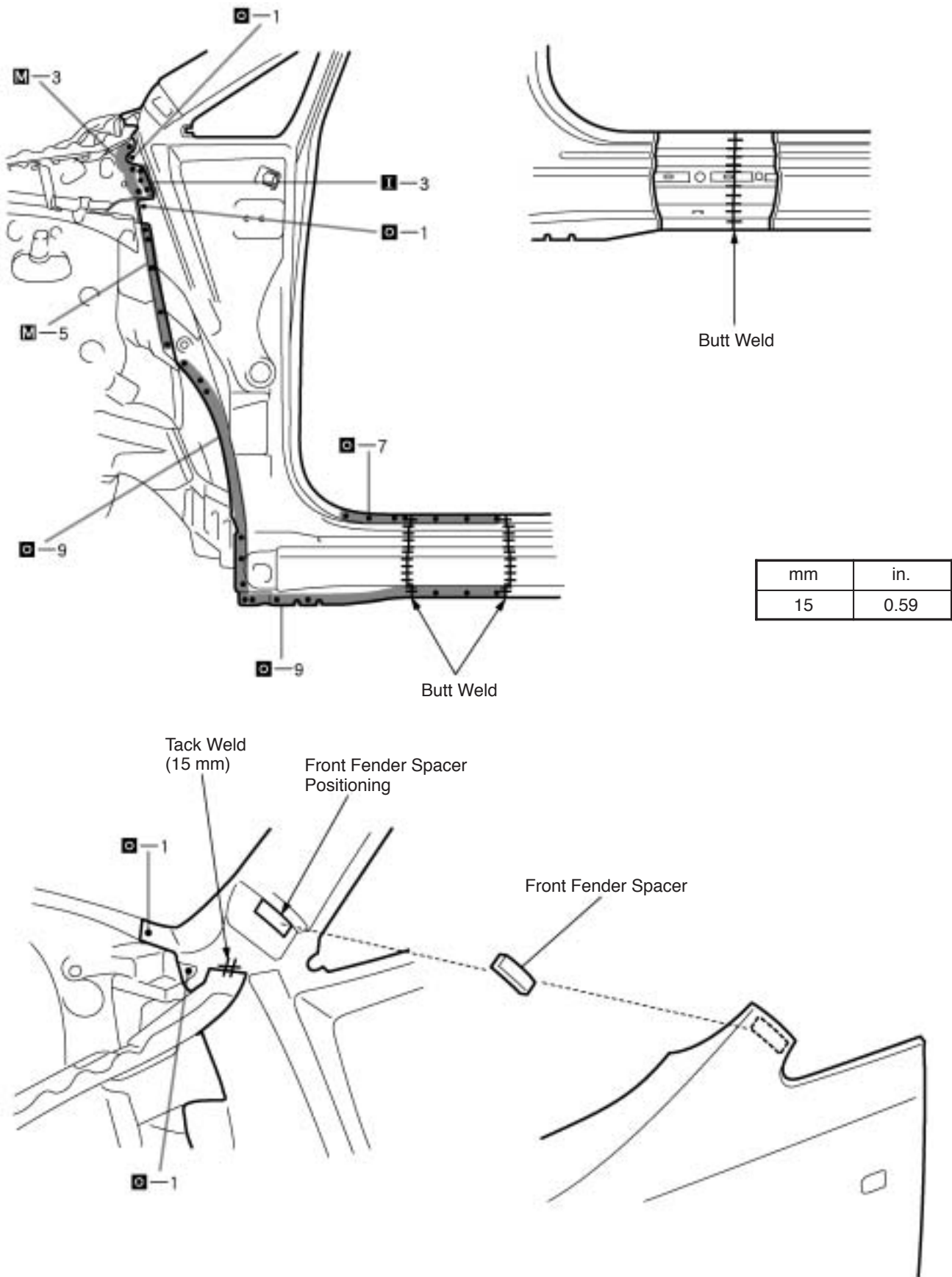
If a spacer thinner than the measured gap is used, the front fender will rattle when it is fitted.

- (3) Fit the front fender, pushing down the attached front fender spacer, and checking that it does not rattle.

**HINT:**

If having wobbles, change the front fender spacer to the thicker one.  
Also, check the alignment of the front fender again.





4. MEASURING THE ENGINE COMPARTMENT DIMENSIONS ([See page BP-94](#))
5. MEASURING THE OPENING PORTION DIMENSIONS ([See page BP-94](#))
6. INSTALL COWL TOP SIDE PANEL ([See page BP-18](#))
7. APPLYING SEALER TO THE ENGINE COMPARTMENT ([See page PC-1](#))
8. APPLYING SEALER TO THE INSIDE OF THE VEHICLE ([See page PC-1](#))
9. APPLYING UNDER COATING ([See page PC-6](#))
10. CHARGING THE POLYURETHANE FOAM ([See page PC-8](#))
11. APPLYING ANTI-RUST AGENT
  - (a) After applying the top coat layer, apply the anti-rust agent to the inside of the necked section structural weld spots.