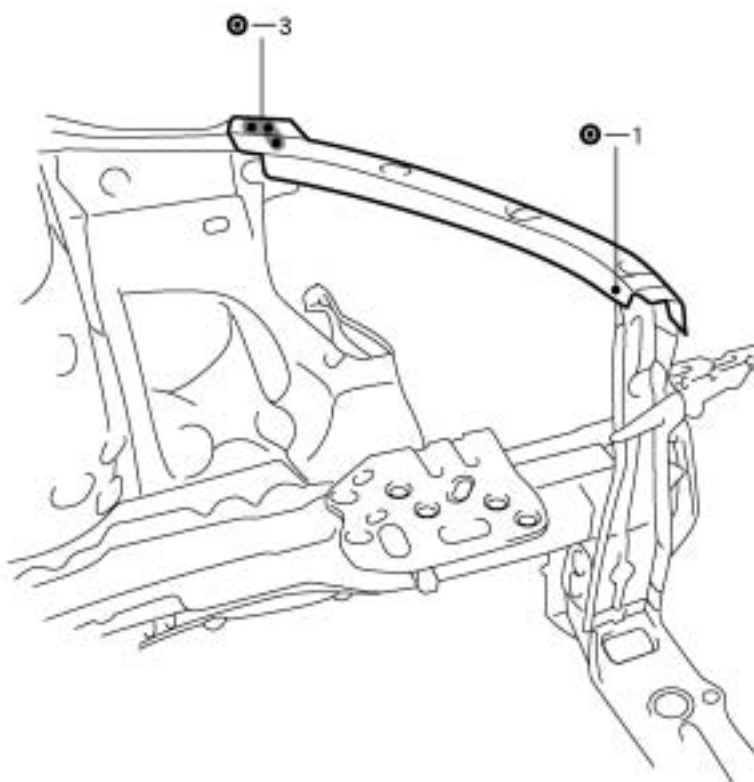
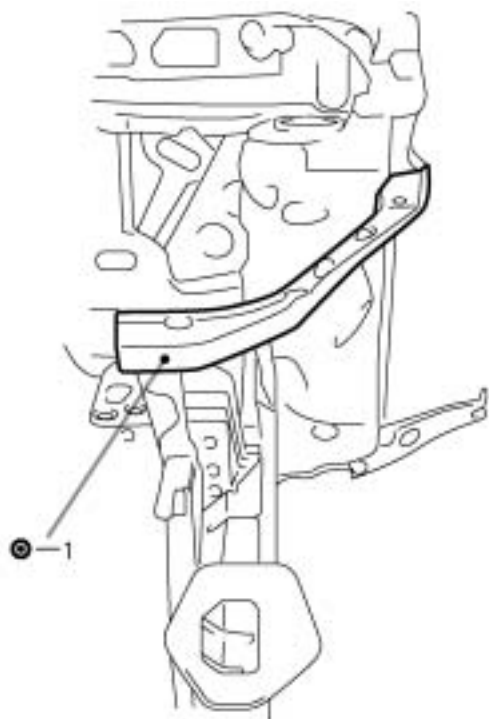


RADIATOR UPPER SUPPORT (ASSY) REPLACEMENT

1. REMOVE RADIATOR UPPER SUPPORT

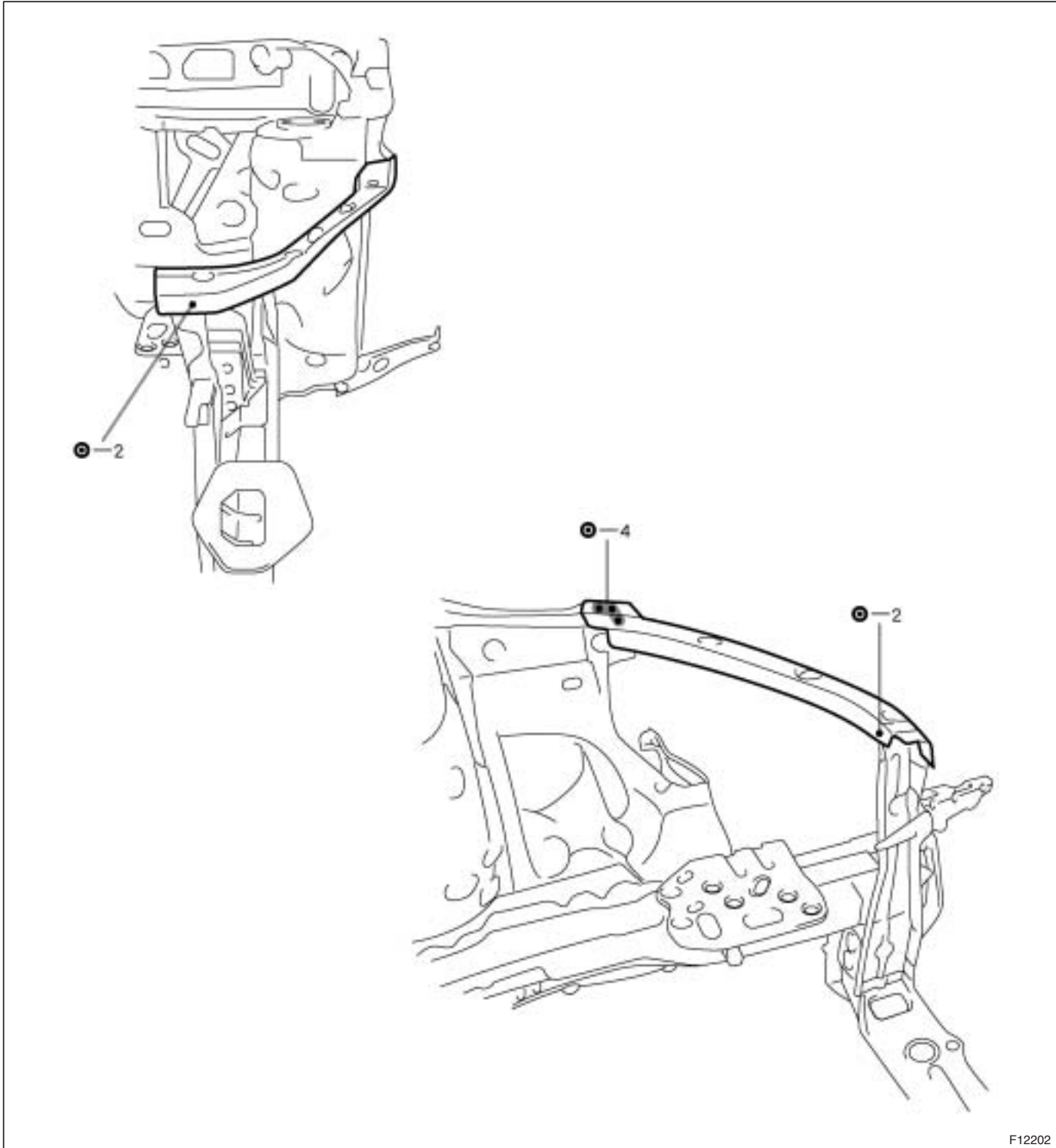


2. INSTALL RADIATOR UPPER SUPPORT

- (a) Temporarily install the new parts and measure each part in accordance with the body dimension diagram.

HINT:

First install the radiator upper center support.



F12202

3. MEASURING THE ENGINE COMPARTMENT DIMENSIONS (See page BP-94).**4. APPLYING ANTI-RUST AGENT**

- (a) After applying the top coat layer, apply the anti-rust agent to the inside of the necked section structural weld spots.