

WIRING DIAGRAMS

Article Text

1993 Mazda 929

For Techdoc Ltd.

Copyright © 1997 Mitchell International

Thursday, March 25, 1999 12:19AM

ARTICLE BEGINNING

1993 WIRING DIAGRAMS
Mazda Wiring Diagrams

Mazda; 929

COMPONENT LOCATION MENU

COMPONENT LOCATIONS TABLE

AA

Component Figure No. (Location)

A/C AMPLIFIER	6 (B-D 20)
A/C COMP CLUTCH	6 (A 23)
A/C RELAY	6 (A 23)
ABS SYSTEM	5 (A-B 16-19)
AIR BAGS	8 (C-D 28-31)
AIRFLOW METER	2 (B 7)
ALTERNATOR	1 (B-C 3)
ASPIRATOR FAN MOTOR	6 (A 22)
BATTERY	1 (A 2)
BRAKE FLUID LEVEL SENSOR	10 (B 39)
BUCKLE SWITCH	11 (B 42)
CIG LTR	10 (D 36)
CIRCUIT OPENING RELAY	2 (B-C 7)
CLOCK	10 (E 38)
COMBINATION SWITCH	9 (A-C 32)
COOLANT TEMP SENSOR	2 (A 4)
COURTESY LIGHTS	3 (E 8)
CPU	4,7 (A 14, A-E 24)
CRANK ANGLE SENSOR	2 (D 5)
CRUISE CONTROL	8 (A-C 28-29)
CRUISE CONTROL MAIN SW/FOG LT SW	8 (A 28)
DEFOGGER RELAY & GRID	11 (A 42-43)
DEFOGGER/HAZARD SWITCH	7 (B 26-27)
DIAG CONN	4 (A-B 15)
DISTRIBUTOR	2 (E 7)
DOOR KEY ILLUM SWITCH	7 (B 25)
DOOR LOCK SWITCHES	7 (D-E 27)
DOOR LOCK TIMER UNIT	7 (D 25)
EC-AT CTRL SYSTEM	5 (C-E 16-19)
EGR POSITION SENSOR	2 (A 7)
FLASHER UNIT	9 (C 35)
FOG LIGHT SWITCH	1 (D 1)
FUEL LID OPENER	12 (C 45)
FUEL TANK UNIT	12 (B 46)
FUSE BLOCK	3,4 (B-C 9-14)
HEADLT RELAY	9 (B 35)
HEATER CONTROL UNIT	6 (B 23)
HEATER RELAY	6 (A 23)
HOLD SWITCH	5 (D 19)

WIRING DIAGRAMS

Article Text (p. 2)

1993 Mazda 929

For Techdoc Ltd.

Copyright © 1997 Mitchell International

Thursday, March 25, 1999 12:19AM

HOOD SWITCH	7 (A 25)
HORN RELAY	1 (B 2)
IGNITION COIL	2 (E 7)
IGNITION SW	3 (A 8)
ILLUM LTS	10 (C-D 38Ä39)
INHIBITOR SW	5 (E 16)
INSTRUMENT CLUSTER	10 (A-E 36Ä39)
INTAKE AIR TEMP SENSOR	2 (A 4)
INTERIOR LT & REAR PERSONAL LTS	9 (E 33Ä34)
JC-03	8 (C-D 31)
JC-04	7 (E 24)
JC-08	4 (E 15)
JC-09	8 (B 31)
JC-12	7 (E 25)
JOINT CONN G-27	3,12 (E 11, D 44)
KEY REMINDER SWITCH	3 (E 8)
KNOCK SENSORS	2 (E 5)
LEFT FRONT DOOR KEY CYLINDER SWITCH	7 (E 27)
LEFT FRONT DOOR SWITCH	4 (B 15)
MAIN FUSE BLOCK	1 (B 3)
MAIN RELAY	2 (B 7)
MAX HI RELAY	6 (A 20)
MIRROR HEATERS	9 (D-E 33)
O2 SENSORS	2 (A 6)
PARKING BRAKE SW	7 (B 25)
PCM	2 (B-E 4)
POWER ANTENNA	12 (E 45)
POWER DOOR LOCKS	7 (B-E 25Ä27)
POWER MIRRORS	11 (C-E 40Ä41)
POWER WINDOW MAIN SW	11 (A-C 40Ä42)
POWER WINDOWS	11 (B-E 42Ä43)
RELAY & FUSE BLOCK	1 (C-D 2Ä3)
RIGHT FRONT DOOR SWITCH	3 (D 11)
SEAT WARMER	12 (A-C 44)
SHIFT LOCK UNIT	7 (A 26Ä27)
SOLAR SYSTEM	9 (D-E 34Ä35)
SPEED SENSOR	5 (E 19)
STARTER	1 (A 3)
STARTER CUT RELAY	3 (A 11)
STOP & TAILLT CHECK UNIT	12 (A 45)
STOP LT SW	12 (D 45)
SUNROOF/SPOT LIGHT SWITCH	9 (D 32)
TELEPHONE SWITCH	8 (A 29)
THROTTLE SENSOR	2 (A 7)
TNS RELAY	9 (B 35)
TRANSCEIVER	8 (A 30Ä31)
TRUNK & FUEL LID OPENER	12 (C 44Ä45)
TRUNK KEY CYLINDER SWITCH	7 (A 25)
TRUNK LIGHT & SWITCH	12 (E 44)
VANITY MIRRORS	10 (E 36)
WASHER LEVEL SWITCH	10 (A 39)
WASHER MOTOR	9 (A 33)

WIRING DIAGRAMS

Article Text (p. 3)

1993 Mazda 929

For Techdoc Ltd.

Copyright © 1997 Mitchell International

Thursday, March 25, 1999 12:19AM

AA

GROUND LOCATION MENU

GROUND LOCATIONS TABLE

AA

Components	Figure No. (Location)
GROUND A: (NEAR BATTERY)	1 (A 2)
GROUND B: (LEFT OF BATTERY)	1 (E 3)
GROUND C: (RIGHT FRONT OF ENGINE COMPT)	1 (E 3)
GROUND D: (LEFT OF BATTERY)	1 (E 3)
GROUND E: (RIGHT FRONT OF ENGINE COMPT)	1 (E 3)
GROUND F: (FRONT ENGINE COMPT, NEAR CRANK ANGLE SENSOR)	2 (E 6)
GROUND G: (FRONT ENGINE COMPT, NEAR CRANK ANGLE SENSOR)	2 (E 6)
GROUND H: (ENGINE COMPT, TOP OF ENGINE BLOCK, JC-06)	4 (D 15)
GROUND I: (ENGINE COMPT, TOP OF ENGINE BLOCK, JC-07)	4 (D 15)
GROUND J: (UNDER LEFT FRONT SEAT)	7 (E 24)
GROUND K: (CENTER OF UNDERDASH JC-01)	7 (E 25)
GROUND L: (LOCATION UNAVAILABLE)	8 (B 31)
GROUND M: (UNDER RIGHT SEAT, JC-10)	8 (C 30)
GROUND N: (RIGHT UNDERDASH)	8 (C 31)
GROUND O: (RIGHT UNDERDASH)	8 (D 30)
GROUND P: (LEFT KICK PANEL)	8 (C 28)
GROUND Q: (LEFT KICK PANEL)	8 (E 28)
GROUND R: (BEHIND C PILLAR TRIM)	11 (A 43)
GROUND S: (UNDER CENTER CONSOLE, BEHIND RADIO, JC-11)	11 (A 43)
GROUND T: (RIGHT KICK PANEL)	11 (B 43)

AA

WIRING DIAGRAMS

Copyright © 1997 Mitchell International
Thursday, March 25, 1999 12:19AM

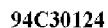


Fig. 1: Engine Compartment & Headlights (Grids 1-3)

Copyright © 1997 Mitchell International
Thursday, March 25, 1999 12:19AM



Fig. 2: Powertrain Control Module (3.0L DOHC) (Grids 4-7)

WIRING DIAGRAMS

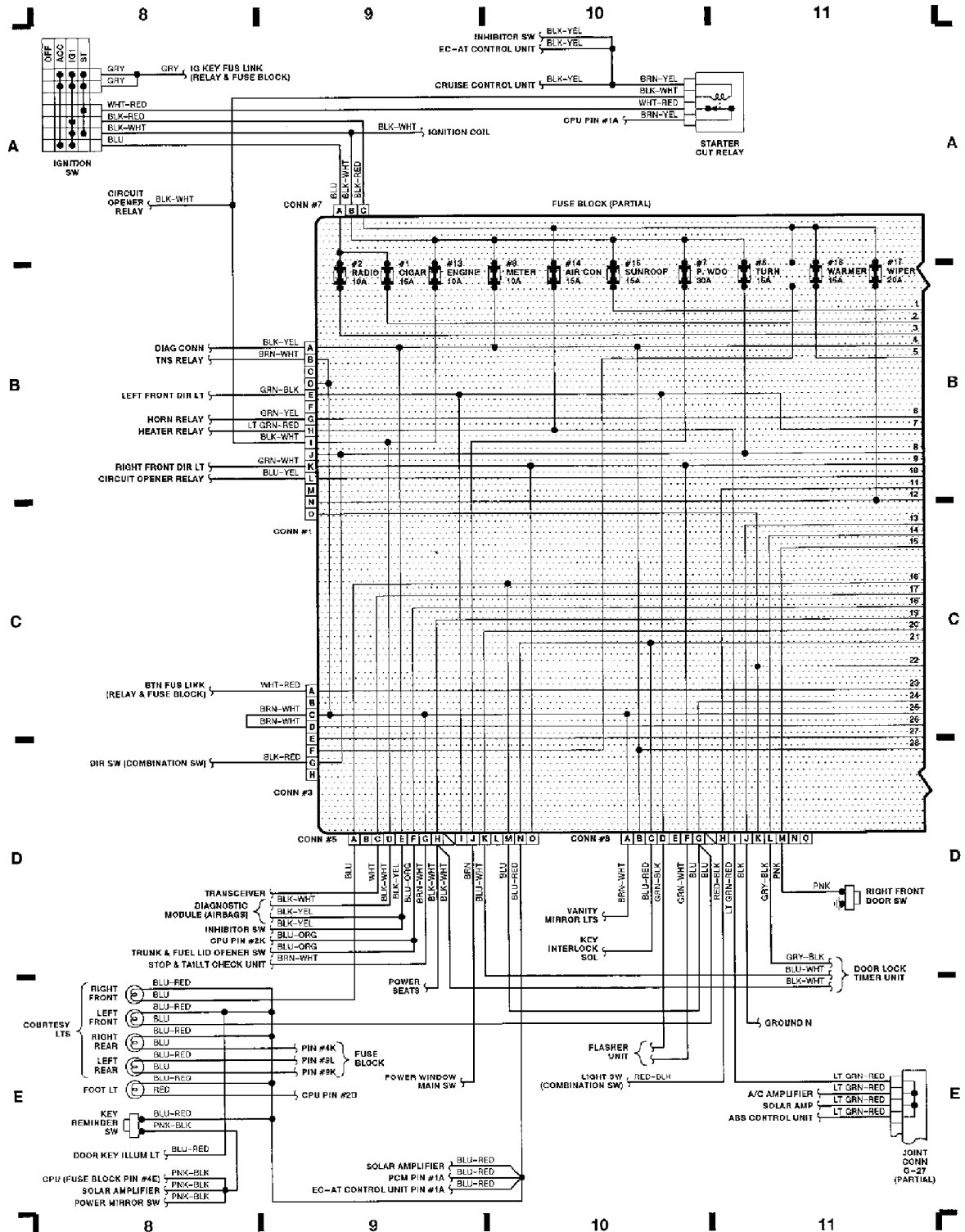
Article Text (p. 6)

1993 Mazda 929

For Techdoc Ltd.

Copyright © 1997 Mitchell International

Thursday, March 25, 1999 12:19AM



94E30126

Fig. 3: Fuse Block (Partial), Ignition Sw (Grids 8-11)

Copyright © 1997 Mitchell International
Thursday, March 25, 1999 12:19AM



Fig. 4: Fuse Block (Partial), CPU (Grids 12-15)

Thursday, March 25, 1999 12:19AM

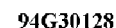


Fig. 5: ABS Control Unit, EC-AT Control Unit (Grids 16-19)

WIRING DIAGRAMS

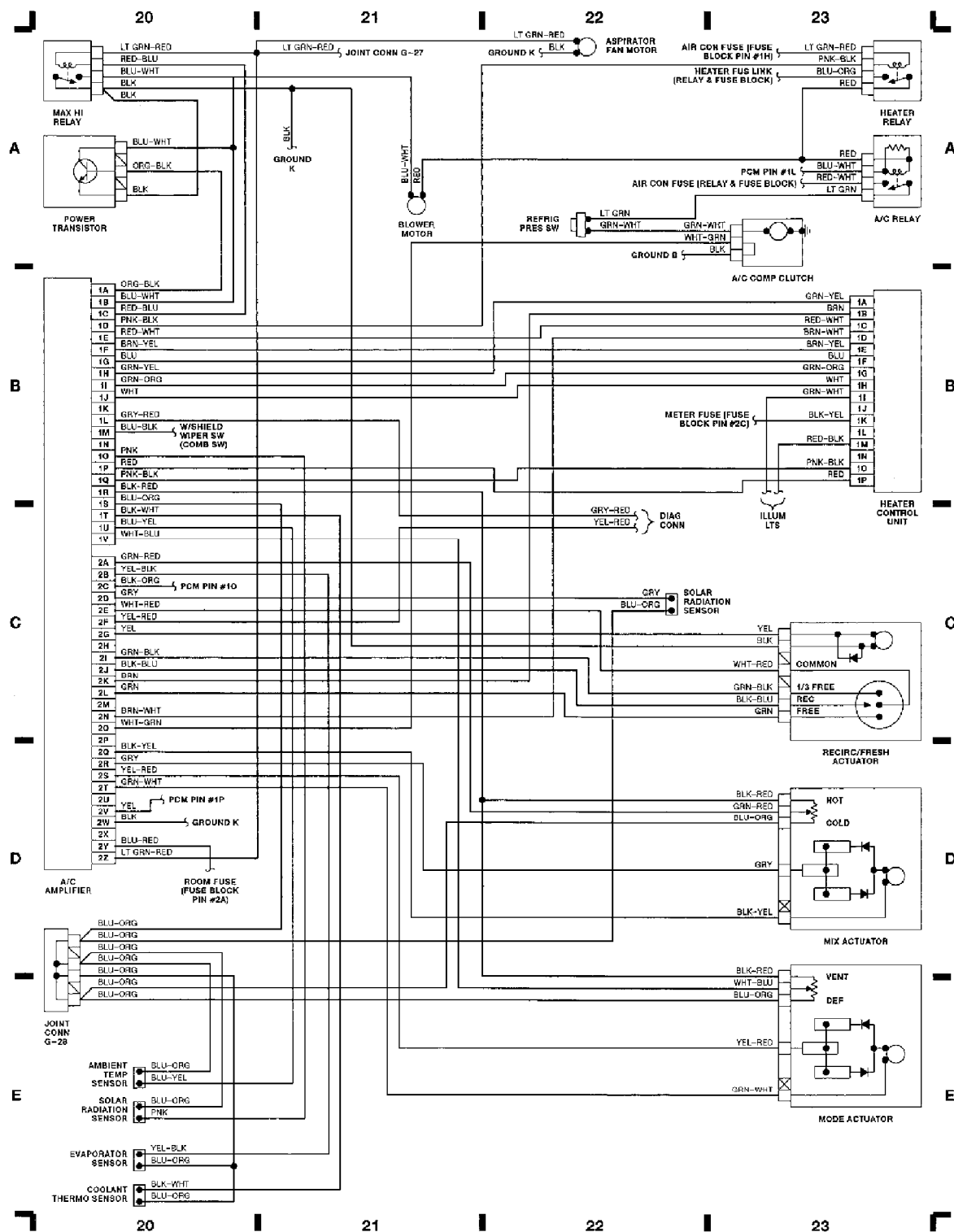
Article Text (p. 9)

1993 Mazda 929

For Techdoc Ltd.

Copyright © 1997 Mitchell International

Thursday, March 25, 1999 12:19AM



94H30129

Fig. 6: A/C Amplifier, Power Transistor, Max Hi Rly (Grids 20-23)

WIRING DIAGRAMS

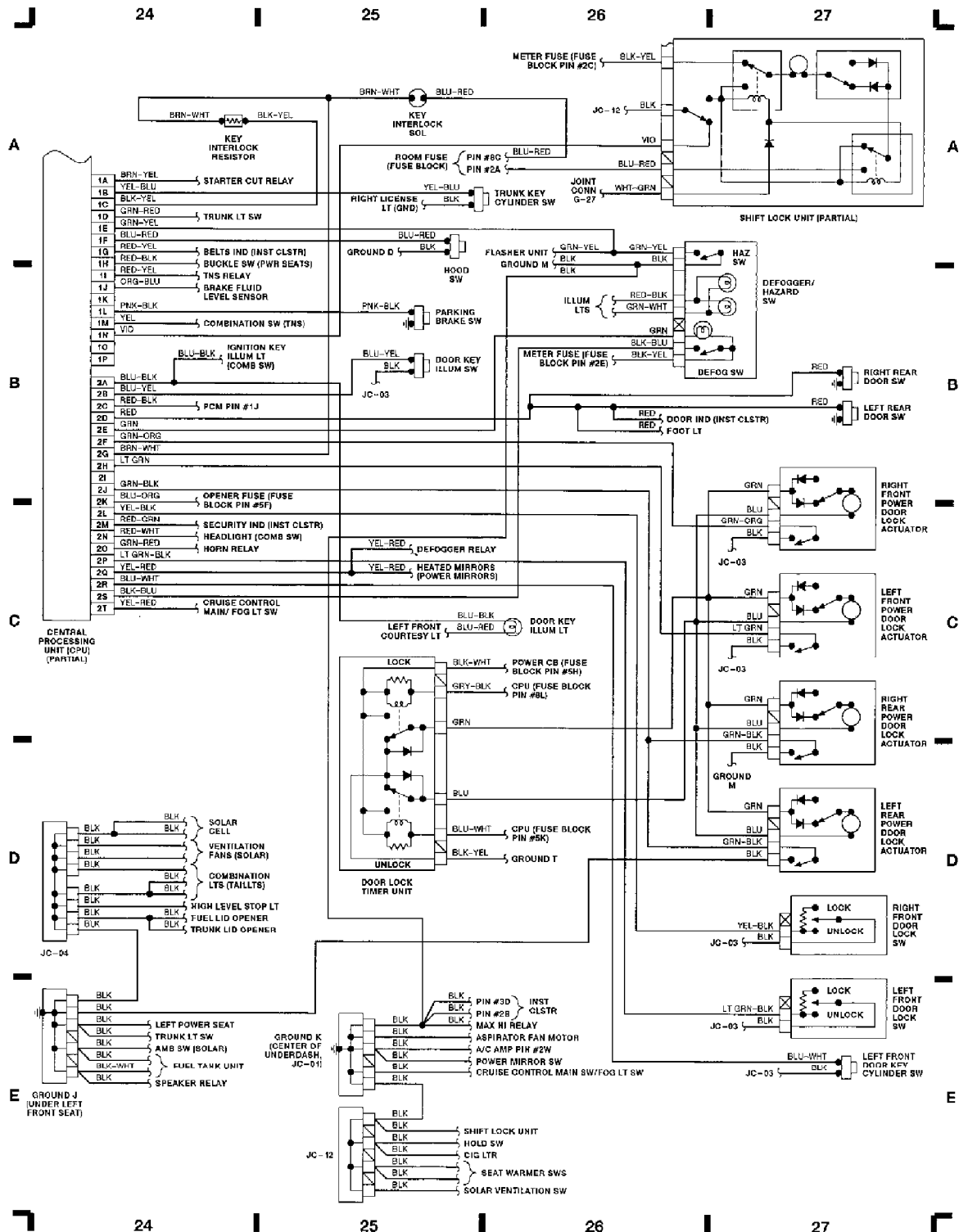
Article Text (p. 10)

1993 Mazda 929

For Techdoc Ltd.

Copyright © 1997 Mitchell International

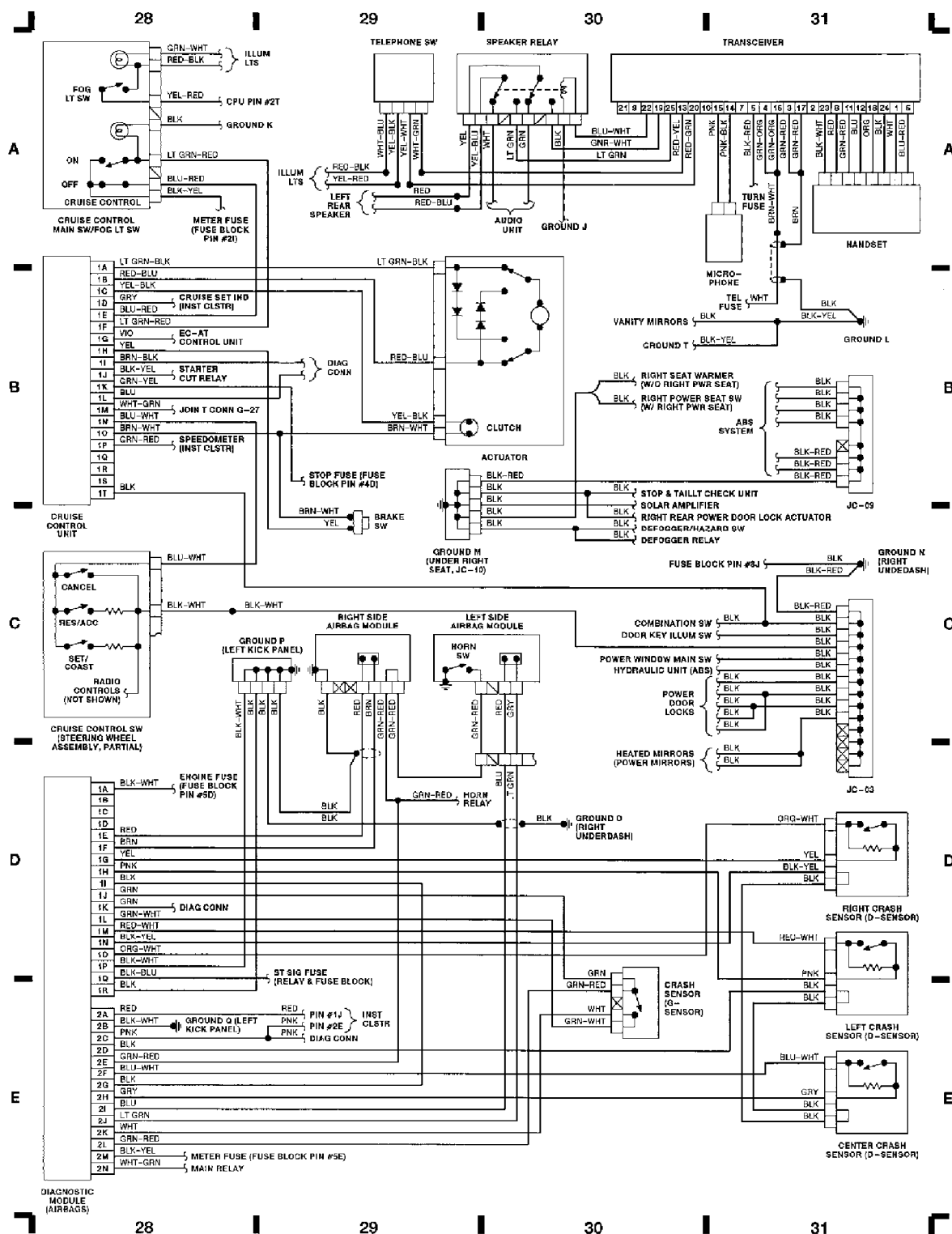
Thursday, March 25, 1999 12:19AM



94A30130

Fig. 7: Central Processing Unit, Door Lock Timer Unit (Grids 24-27)

WIRING DIAGRAMS
Article Text (p. 11)
 1993 Mazda 929
 For Techdoc Ltd.
 Copyright © 1997 Mitchell International
 Thursday, March 25, 1999 12:19AM



94B30131

Fig. 8: Cruise Ctrl Main Sw/Fog Lt Sw, Transceiver (Grids 28-31)

WIRING DIAGRAMS
Article Text (p. 12)
 1993 Mazda 929
 For Techdoc Ltd.
 Copyright © 1997 Mitchell International
 Thursday, March 25, 1999 12:19AM

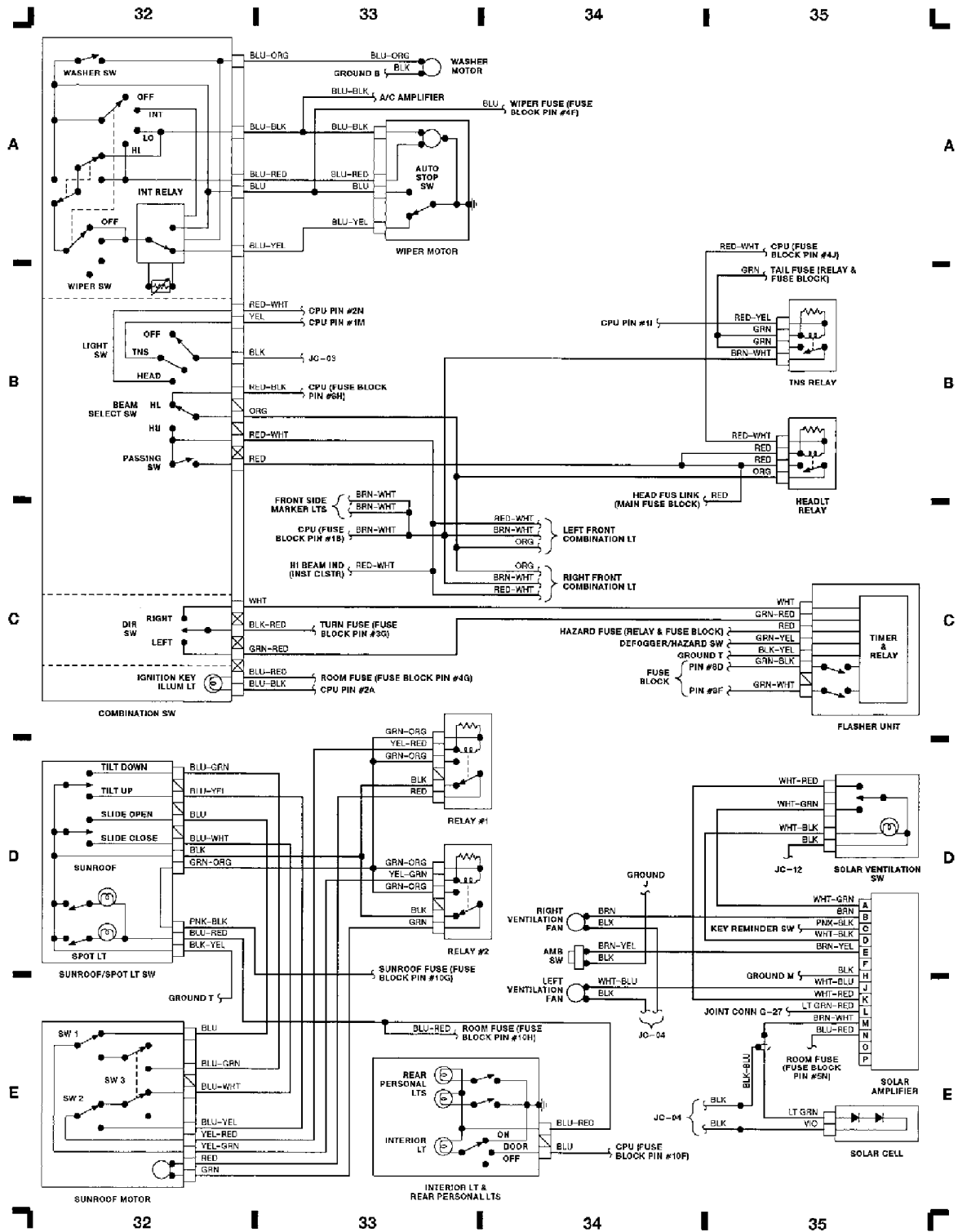


Fig. 9: Combination Sw, Sunroof Motor, Flasher Unit (Grids 32-35)

WIRING DIAGRAMS

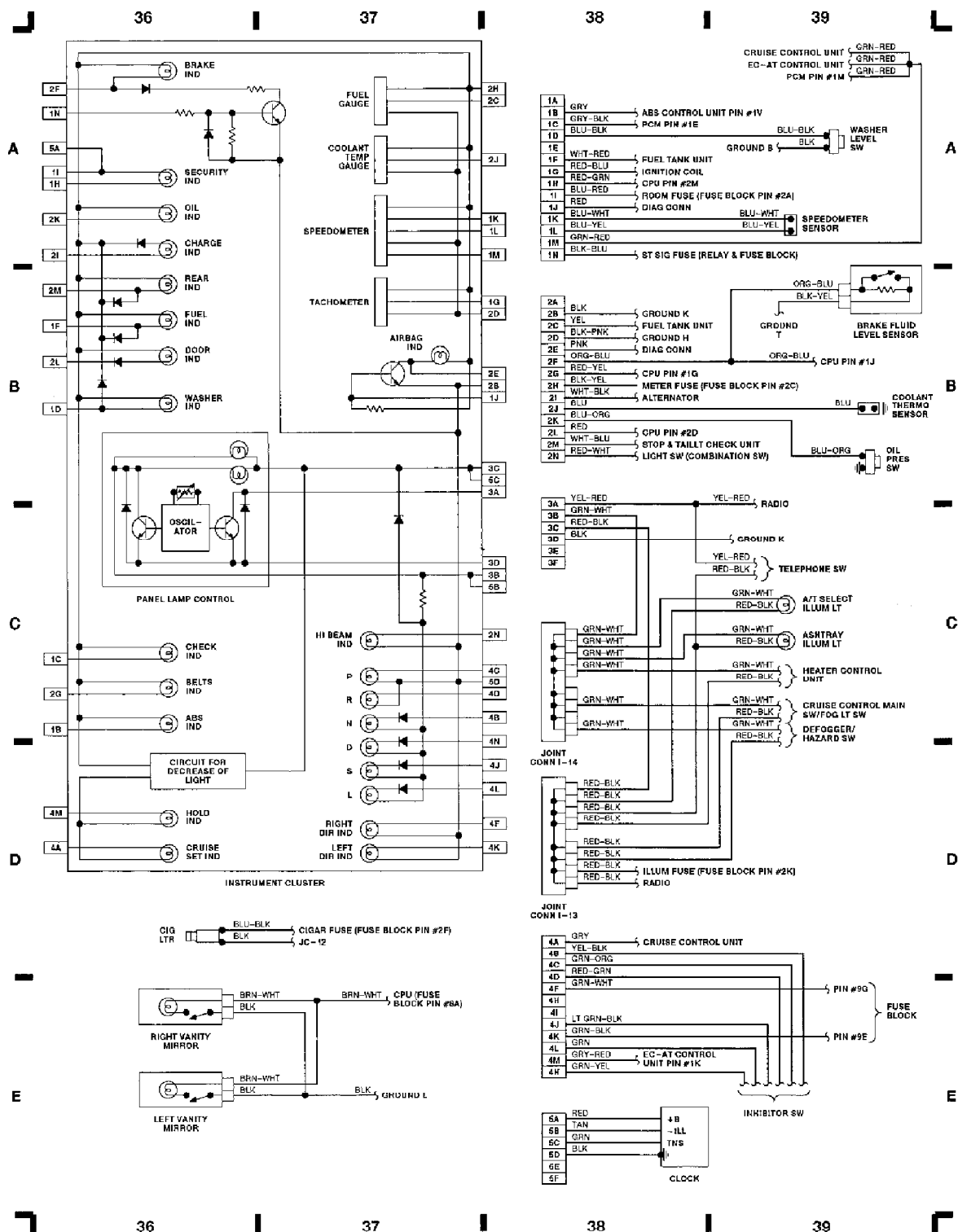
Article Text (p. 13)

1993 Mazda 929

For Techdoc Ltd.

Copyright © 1997 Mitchell International

Thursday, March 25, 1999 12:19AM



94D30133

Fig. 10: Instrument Cluster, Courtesy Lights (Grids 36-39)

WIRING DIAGRAMS

Article Text (p. 14)

1993 Mazda 929

For Techdoc Ltd.

Copyright © 1997 Mitchell International

Thursday, March 25, 1999 12:20AM

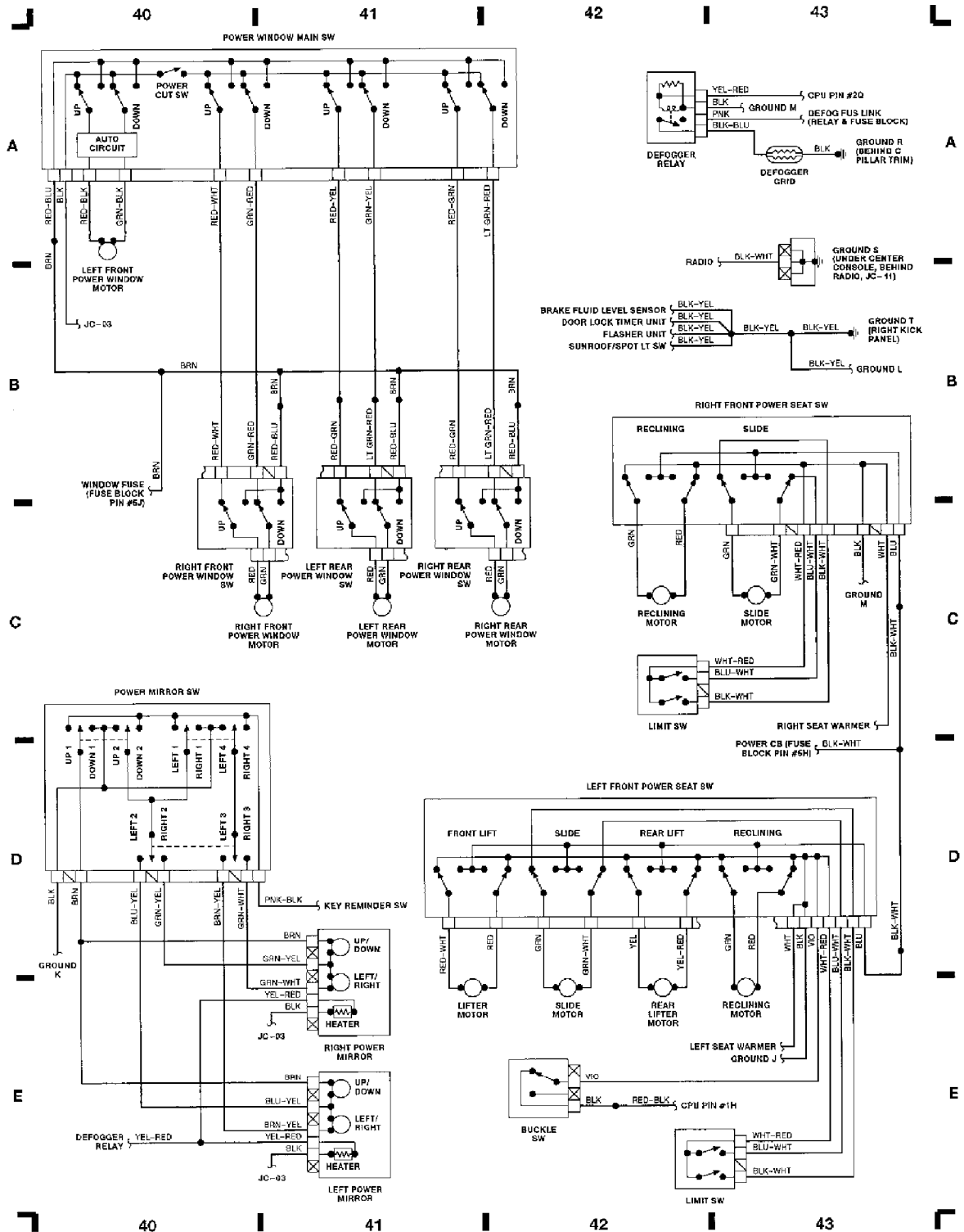


Fig. 11: Power Window Main Sw, Power Mirror Sw (Grids 40-43)

WIRING DIAGRAMS

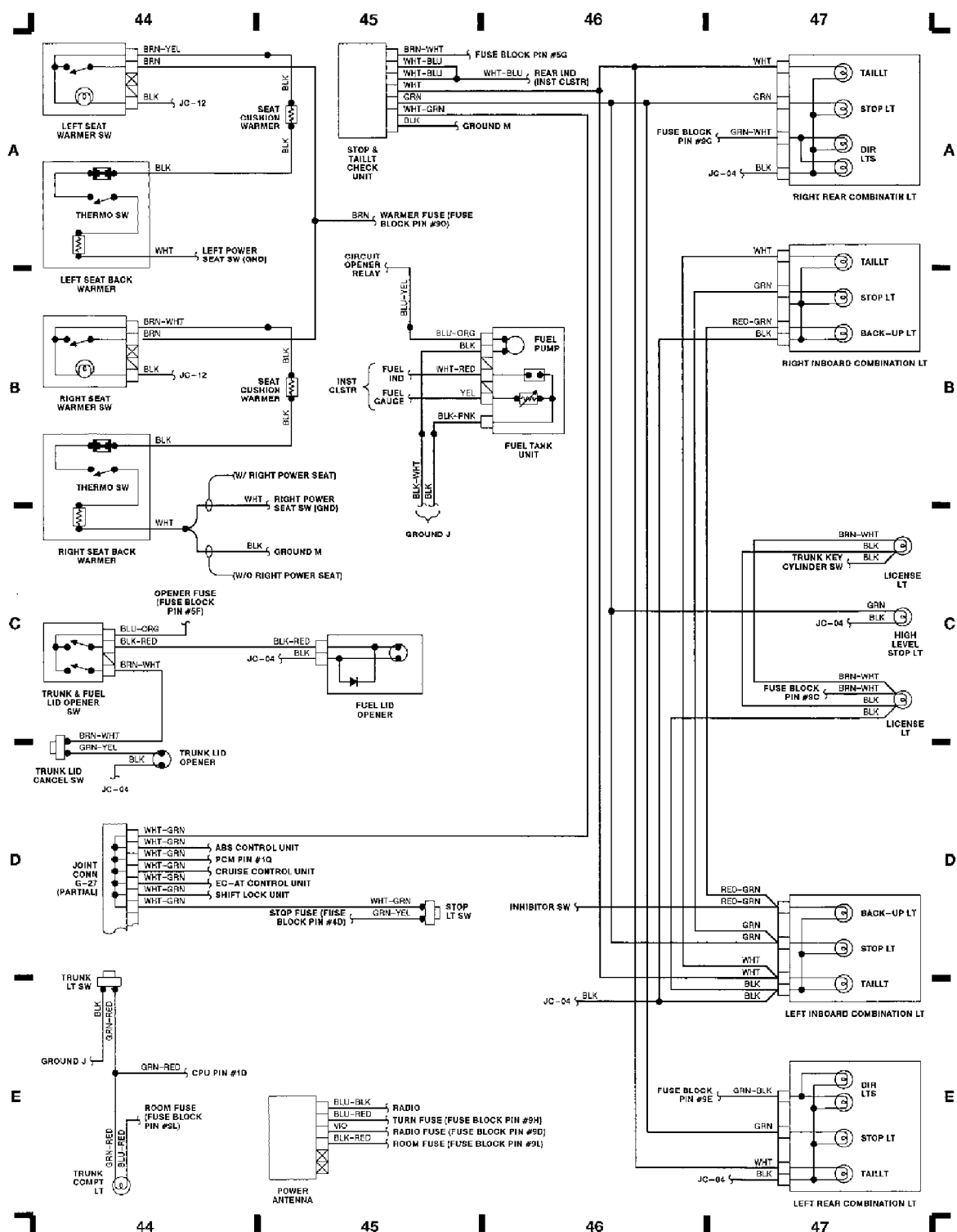
Article Text (p. 15)

1993 Mazda 929

For Techdoc Ltd.

Copyright © 1997 Mitchell International

Thursday, March 25, 1999 12:20AM



94F30135

Fig. 12: Seat Warmer, Trunk Lights, Taillights (Grids 44-47)

END OF ARTICLE