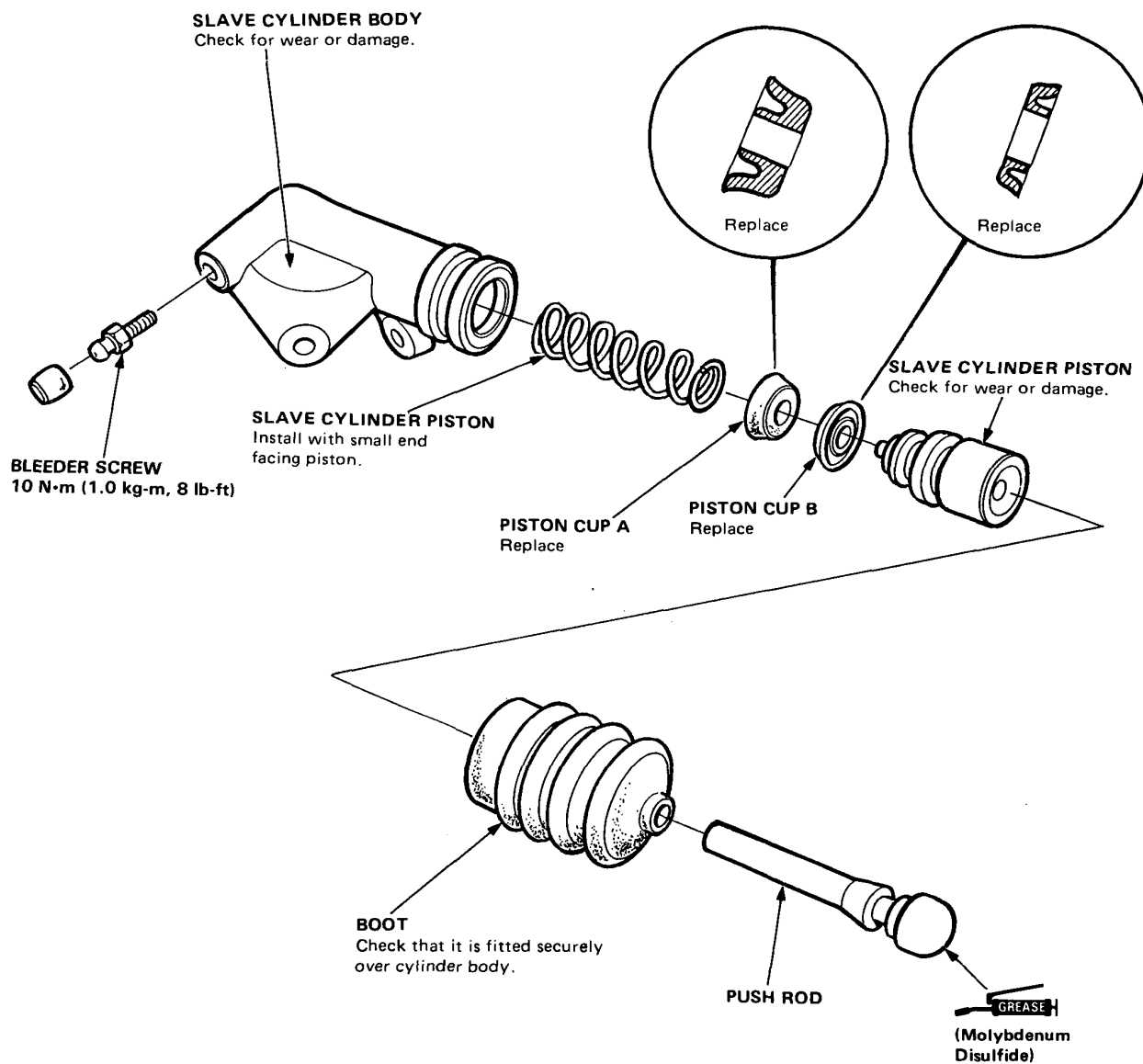




# Slave Cylinder

## Overhaul/Inspection



# Slave Cylinder

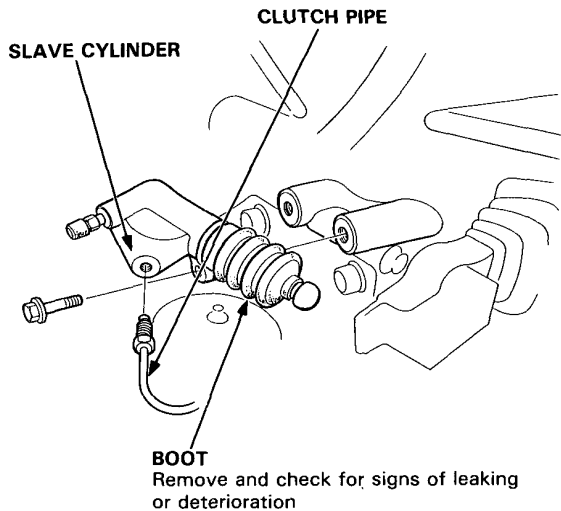
## Removal

1. Disconnect the clutch pipe from the slave cylinder.

### CAUTION:

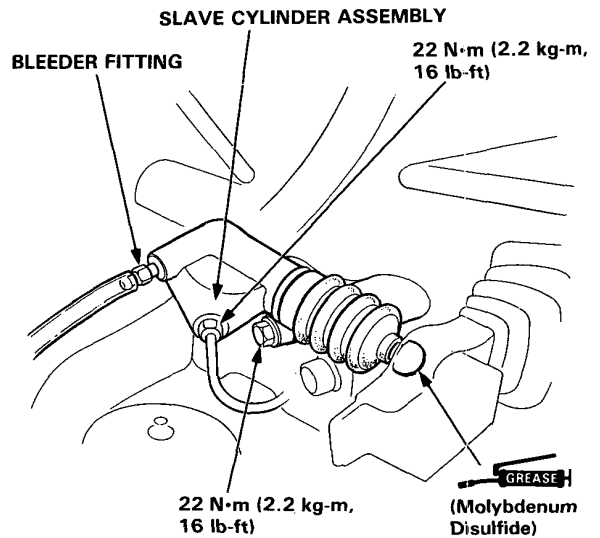
- Avoid spilling brake fluid on the painted surfaces, as it may damage the finish.
- Plug the end of the clutch pipe with a shop rag to prevent brake fluid from coming out.

2. Remove the slave cylinder from the clutch case.



## Installation

1. Install the slave cylinder assembly on the clutch case.



2. Bleed the clutch hydraulic system:

- Attach a pipe to the bleeder fitting and suspend the hose in a container of brake fluid.
- Make sure there is an adequate supply of fluid at the master cylinder, then slowly pump the clutch pedal until no more bubbles appear at the bleeder hose.
- Re-fill the master cylinder fluid when done.