

Seat Belts

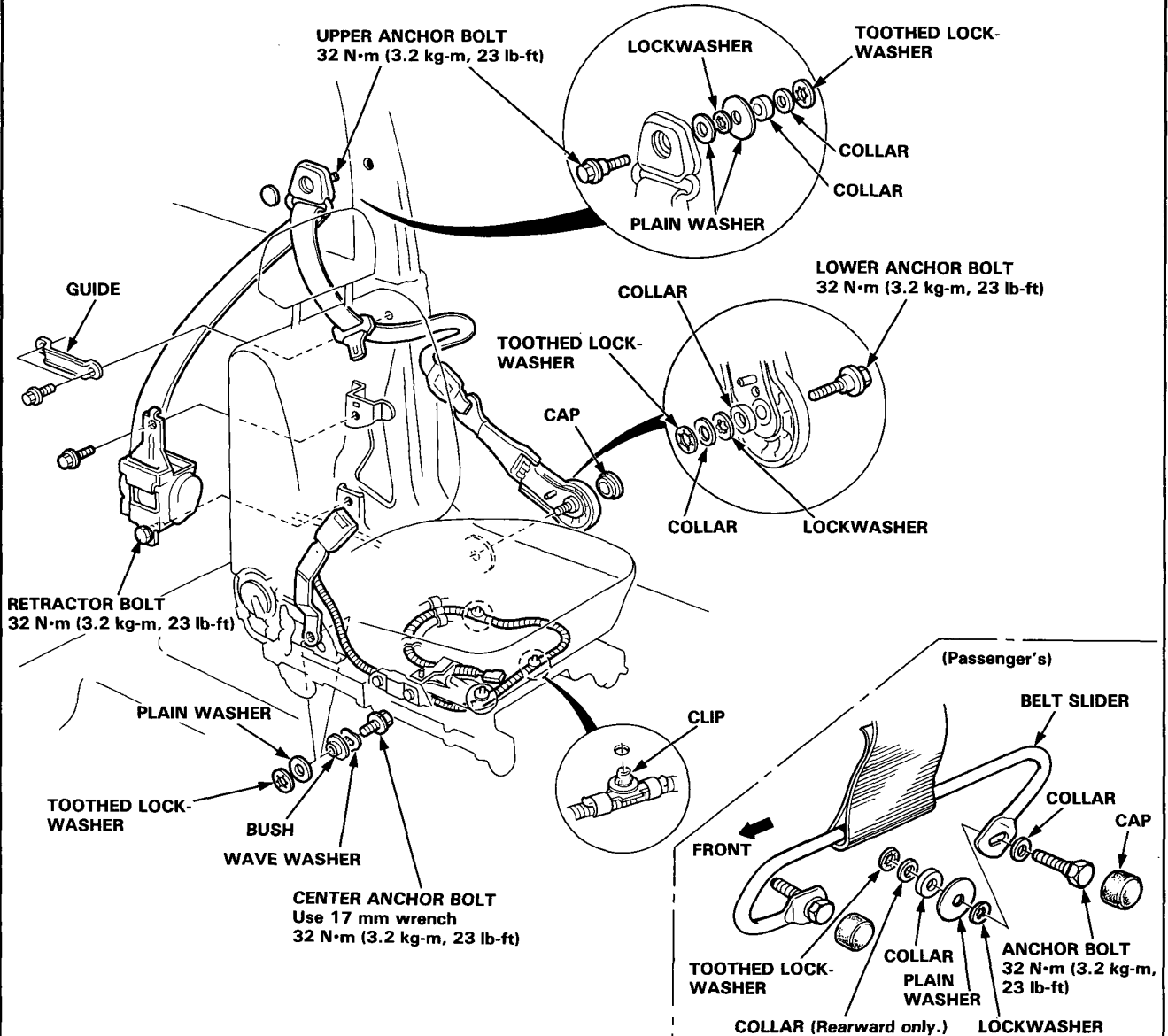


Front Replacement

(Driver's)

CAUTION: Check the seat belts for damage (page 14-51), and replace them if necessary. Be careful not to damage them during removal and installation.

1. Remove the rear seat, then remove the quarter trim panel (page 14-42).
2. Remove the upper anchor bolt, lower anchor bolt and retractor bolt with a 17 mm socket or box-end wrench.
3. Remove the front seat, then remove the center anchor bolt.



4. Install the seat belt in the reverse order of removal. Make sure you assemble the washers and collars correctly on the upper and lower anchor bolts.

NOTE: Before attaching the quarter trim panel, make sure there are no twists in the belt.