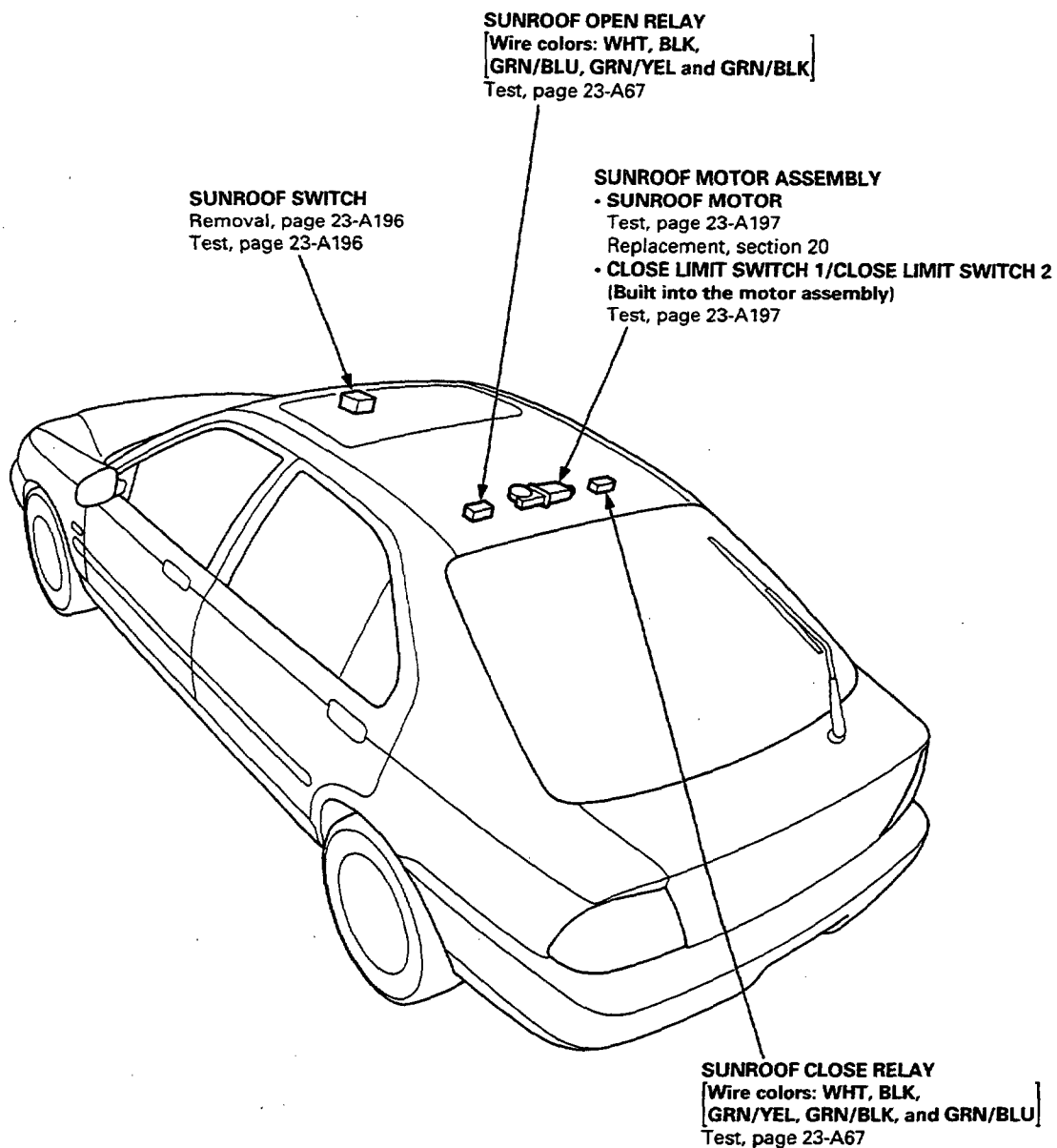


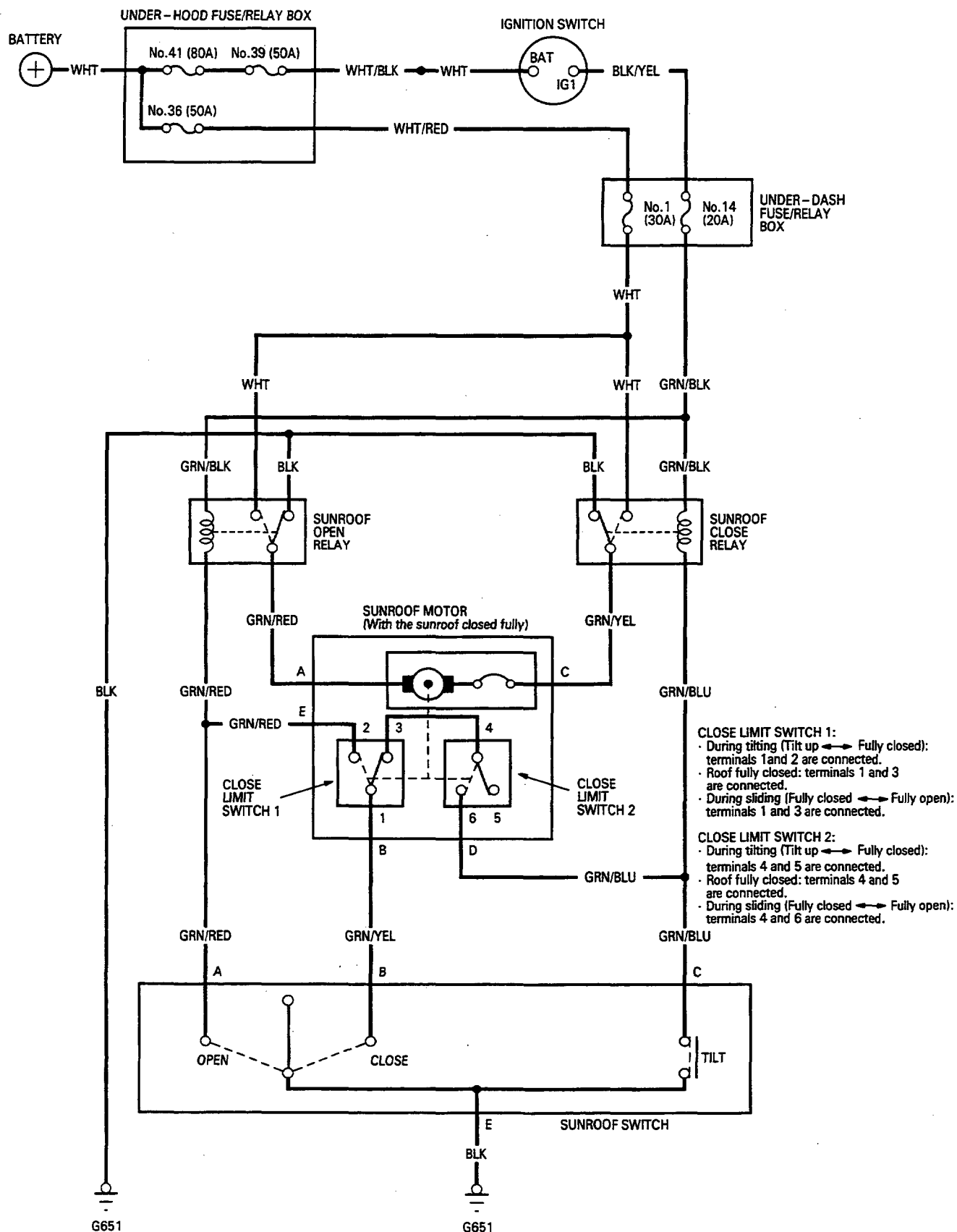
Sunroof

Component Location Index





Circuit Diagram

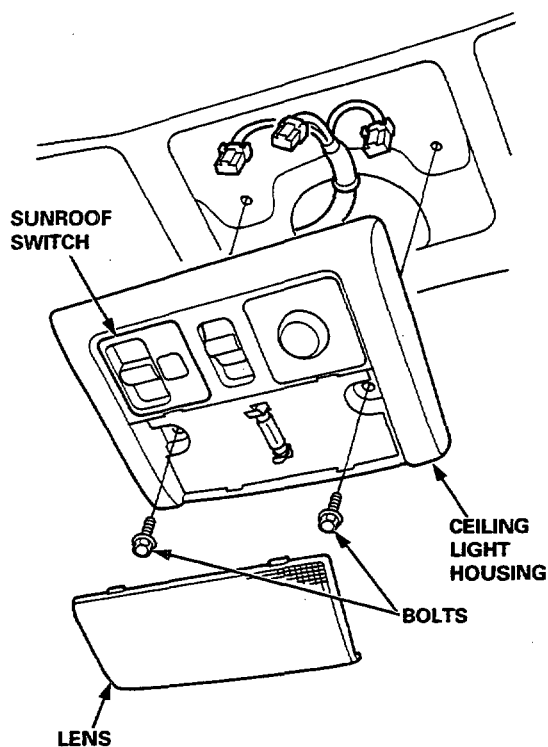


- CLOSE LIMIT SWITCH 1:**
- During tilting (Tilt up \longleftrightarrow Fully closed): terminals 1 and 2 are connected.
 - Roof fully closed: terminals 1 and 3 are connected.
 - During sliding (Fully closed \longleftrightarrow Fully open): terminals 1 and 3 are connected.
- CLOSE LIMIT SWITCH 2:**
- During tilting (Tilt up \longleftrightarrow Fully closed): terminals 4 and 5 are connected.
 - Roof fully closed: terminals 4 and 5 are connected.
 - During sliding (Fully closed \longleftrightarrow Fully open): terminals 4 and 6 are connected.

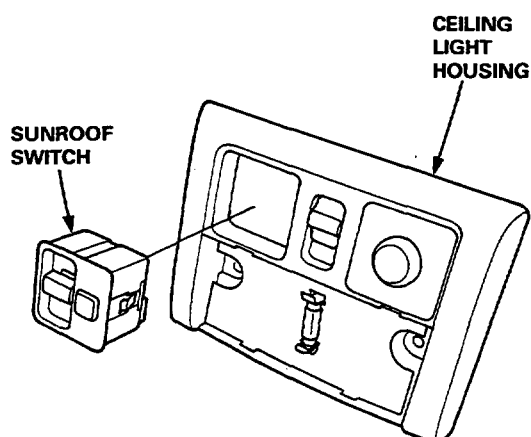
Sunroof

Switch Removal

1. Turn the front ceiling light switch OFF.
2. Pry the ceiling light lens off from the light housing.
3. Remove the two bolts and the light housing.
4. Disconnect the connectors from the light housing.

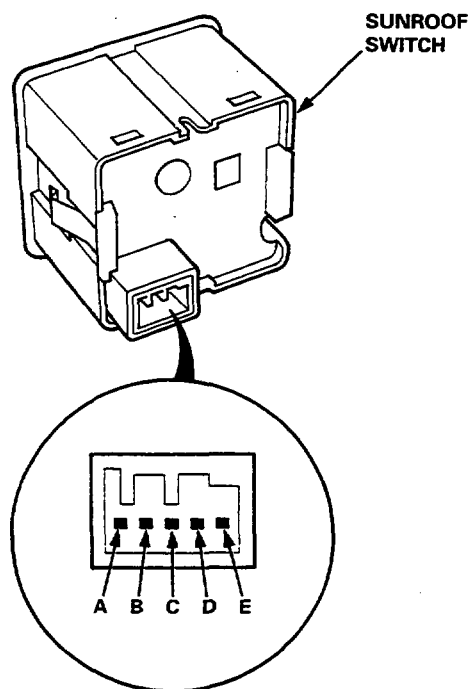


5. Separate the sunroof switch from the ceiling light housing.

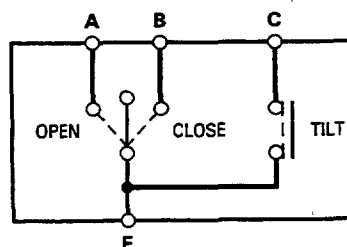


Switch Test

1. Check for continuity between the terminals in each switch position according to the table.



Terminal	A	B	C	E
Position				
TILT			○	○
CLOSE		○		○
OPEN	○			○



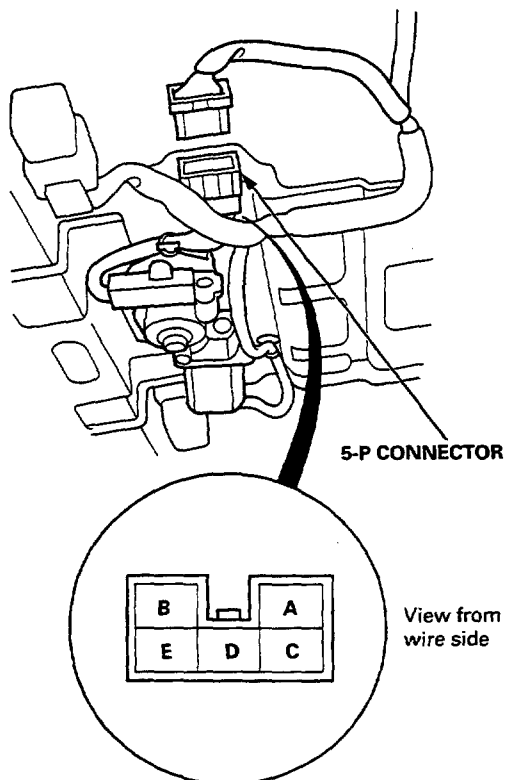


Motor Test

1. Remove the roof lining (see section 20).
2. Disconnect the 5-P connector from the sunroof motor.
3. Test the motor:

Terminal	A	C
Position		
OPEN	⊕	⊖
CLOSE	⊖	⊕

NOTE: The motor clutch test is in section 20.



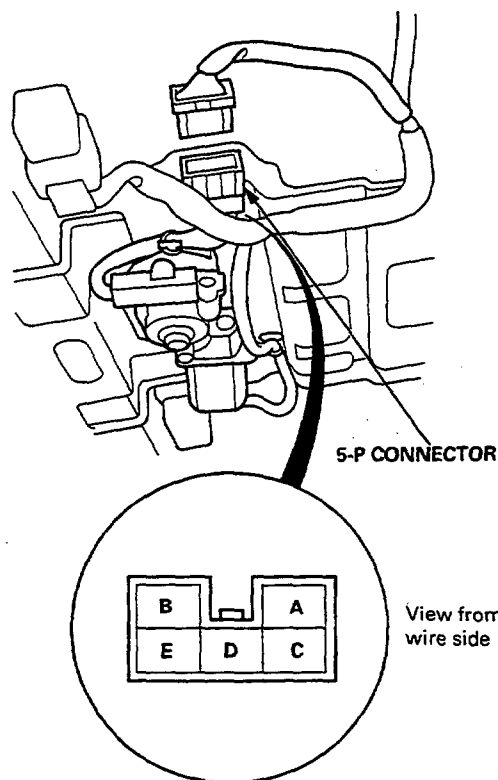
4. If the motor does not run or fails to run smoothly, replace it.

Limit Switch Test

1. Remove the roof lining (see section 20).
2. Disconnect the 5-P connector from the motor.
3. Check for continuity between the terminals in each switch position according to the table.

NOTE: Turn the motor by hand with the wrench.

Terminal	B	E	D
Sunroof Position			
Tilted up ↔ Fully closed	○	○	
Fully closed			
Fully open ↔ Fully closed	○		○



4. If there is no continuity, replace the sunroof motor assembly.